

Trends in LVT Click Installation Berkshire Plank and ALTA CL

Includes Alternative "Zip line" installation

1. Before you start

1.1 How to condition (acclimate) your floor?

Your luxury vinyl planks should be stored in the room they are to be installed for a minimum of 48 hours prior to installation. During this time, the planks should remain in the carton on a flat surface, and the room temperature should be maintained consistent between 70 and 80°F (20 to 25 degree C).

1.2 How to prepare your subfloor?

Make sure that your subfloor is smooth, flat, dry, clean and solid:

- Carpet staples or adhesive residue should be removed prior to installation
- Subfloors should be flat within a tolerance of 1/16" (2mm) over a span of 4 feet (1.2m). Any unevenness over 1/16" (2mm) must be sanded down or leveled with a floor leveler. Voids or humps in the subfloor will prevent the planks from locking properly.
- Although these luxury vinyl planks are water-resistant, they are not to be used as a moisture barrier. Your subfloor should be completely dry prior to installation of the vinyl floor (<2,5% moisture degree).
- The final responsibility for determining if the concrete is dry enough for installation of the flooring lies with the floor covering installer.
- Ceramic tile should be made smooth by applying a cementitious overlay such as patching or leveling compound to smooth out grout joints.

Important

Different production runs

Vinyl floors can have slight color variations in between production runs. Before starting the installation, it is best to check the production run # which is indicated on the label on the short side (end) of the carton. If you find that you have cartons from different production runs, it is highly recommended that you open 2-3 cartons and install a mix of planks from each different production run on your floor. This will result in a more natural looking floor.

Luxury Vinyl Click products installed via the floating method do not require an underlayment. If any underlayment is used, please ensure it is warranted for Luxury Vinyl floating installations. This product is also not to be installed in areas that have a potential for flooding such as saunas or outdoor areas.

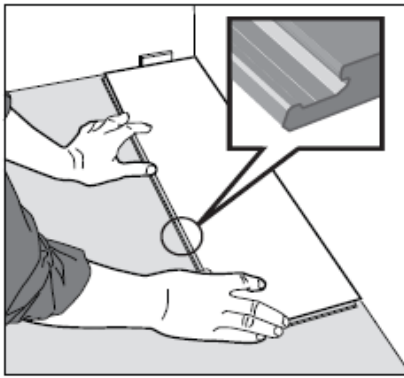
Connect panels with care and make sure the click engages well before pushing the plank down. Forcing the planks might cause surface damage (lifting end-joint surface edge) beyond repair.

After installation, make sure to keep the room air conditioned within a temperature range of 10°C to 30°C (50°F to 85°F). Excessively high or low temperatures may cause this vinyl floor to expand or contract and lead to visual defects of the floor that will not be warranted.

Installation in areas with Sustained Direct Sunlight. Temperatures should be maintained in a home environment not to exceed 30°C (85°F). In cases where the flooring is in direct sunlight for much of the day (Sunrooms, etc.) it is recommended that the planks/tiles be glued down in those spots/areas. The planks are still clicked together as per the floating installation instructions, but an approved Luxury Vinyl flooring adhesive should be used in small direct-sun areas as needed. Be sure to follow the adhesive manufacturer's instructions, including correct trowel size.

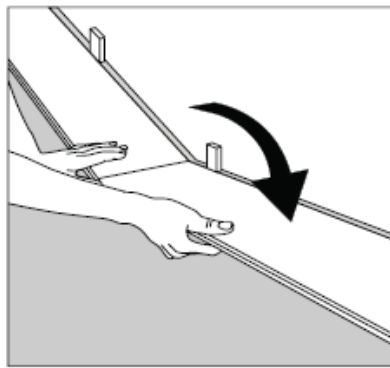
2. Installation method of floor panels

1



1. When installing the luxury vinyl plank you must remember to leave a 6mm (1/4") gap around the perimeter of the room. When first starting the installation you can install against the wall and after 2-3 rows, adjust the distance from the wall by 6mm (1/4") and insert spacers to maintain that gap. Begin installation in the left corner remembering to leave a gap of 6mm from the left wall.

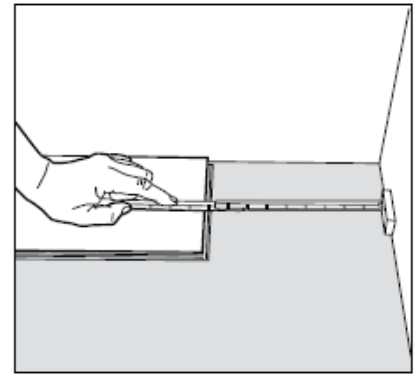
2



2. Insert the end section of the next floorboard at an angle to the first one, then lay down. Complete the first row in the same manner.

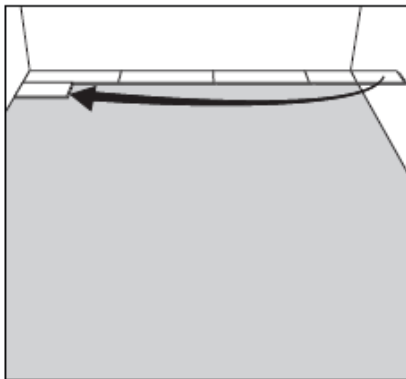
3

10/13/14



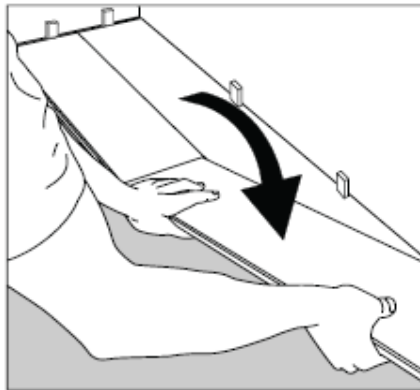
3. Place the final floorboard face down and the short side without the locking strip towards the wall. The distance to the wall should be 6mm (1/4"). Mark where the floorboard is to be cut.

4



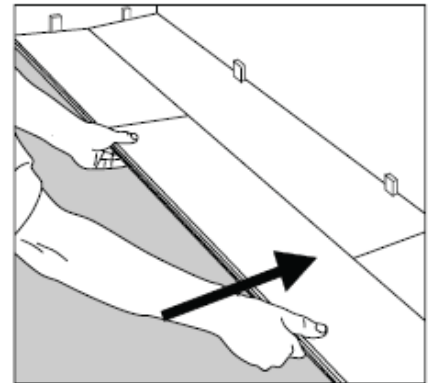
4. Start the second row with the leftover cut part of the last plank of the previous row. The starter piece should measure at least 30 cm (12"). If not, start with a new plank and cut it larger than the required 30 cm (12"). Please note that end joints should always be at least 30cm (12") from each other from row to row.

5



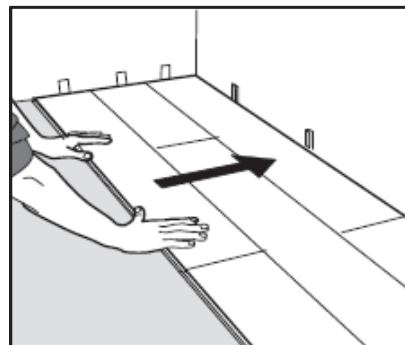
5. Place the floorboard at an angle against the floorboard in the previous row, press forward and fold down at the same time.

6



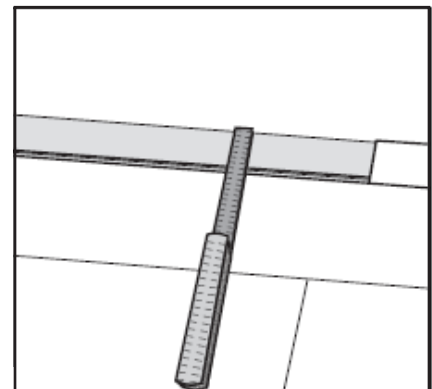
6. Place the short end of the floorboard at an angle against the previous installed floorboard and fold down. Ensure that the board is positioned in the integral locking strip of the floorboard in the previous row.

7



7. Lift both the current as well as the previous plank from this row, push to slide the current plank against the row in front so it aligns with the previous plank. The current and previous plank can now be folded completely down to horizontal position.

8



8. After 2-3 rows: adjust the distance to the front wall by placing spacers of 6mm. Keep the spacers in position during the entire time of installation and remove once the installation is completed.

9. If the wall is uneven, the floorboards must be adapted to its contours. Mark the floorboards with the contour of the wall. Do not forget to leave 6mm of gap from the wall. This procedure shall be used also for the first row if necessary.

Alternative “Zip line” installation

5a. Continue to install the next planks from the 2nd row by first connecting the short sides (ends) of the planks together until the other side of the room.

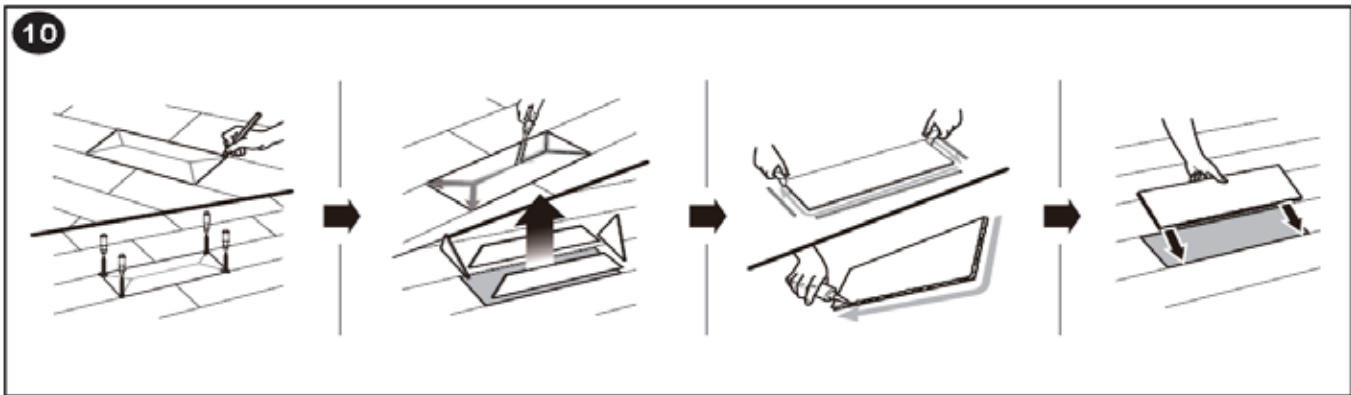
5b. Useful Hint: Use connecting pieces to make sure that the short sides of each plank are aligned properly.

Note: make connecting pieces by cutting 1 plank into small pieces of each 10cm long.

6. Move the 2nd row entirely towards the 1st row. Then start connecting at one end by lifting the first plank of the 2nd row in a 30° angle and inserting the tongue into the groove of the previous row. Gradually move down the row inserting plank after plank of the 2nd row into the first row.

7. Once done, Verify that the 2nd row is properly engaged into the first row, after which all connecting pieces can be removed.

Replacing a Plank



Keep some spare tiles in case any future tile replacement is required. If you need to replace a tile, take a rotary tool and cutting disc or sharp chisel, cut the tile in the middle and then up to each corner. Take care not to cut any under floor wiring or pipe work. Lift the cut pieces out of place. With a spare tile cut the tongue off the short side and groove off from both long and short sides of the replacement tile. Apply a thin bead of glue to the tongues of the remaining tiles on the floor surrounding the tile being replaced (NOTE: a premium vinyl adhesive will suffice). Hold the board at a 45-degree angle. Slip the tongue that is still present into the groove at one end of the hole. Gently lower the board into place in the hole and apply an evenly distributed weight over the tile for 48 hours until adhesive is dried.

3. Installation over Radiant Heat Subfloors

This Luxury Vinyl flooring may be installed over water-based radiant-heated subfloors according to above mentioned instructions, provided the surface temperature of the system does not exceed 81 degrees Fahrenheit (27 degrees Celsius).

IMPORTANT: Due to the speed of sudden temperature changes, which has potential to negatively affect vinyl flooring construction, it is not recommended to install over electrical radiant heating systems. This will not be covered by the manufacturer’s warranty. Only radiant heating system using water are acceptable.

4. Care and maintenance

- Sweep or vacuum daily using soft bristle attachments.
- Clean up spills and excessive liquids immediately.
- Damp mop as needed and use cleaners recommended for no-wax vinyl floors.
- Protect floor from constant direct sunlight.
- Use proper floor protection devices such as felt protectors under furniture - and a mat at entrance ways.
- Make sure pets have nails clipped regularly.
- Do not use abrasive cleaners, bleach or wax to maintain the floor.
- Do not drag or slide heavy objects across the floor.