

Trends in LVT Click Installation

Berkshire Tile

Includes Alternative "Zip line" installation

1. Before you start

1.1 How to condition (acclimate) your floor?

Your luxury vinyl planks should be stored in the room they are to be installed for a minimum of 48 hours prior to installation. During this time, the planks should remain in the carton on a flat surface, and the room temperature should be maintained consistent between 70 and 80°F (20 to 25 deg C).

1.2 How to prepare your subfloor?

Make sure that your subfloor is smooth, flat, dry, clean and solid:

- Carpet staples or adhesive residue should be removed prior to installation
- Subfloors should be flat within a tolerance of 1/16" (2mm) over a span of 4 feet (1.2m). Any unevenness over 1/16" (2mm) must be sanded down or leveled with a floor leveler. Voids or humps in the subfloor will prevent the planks from locking properly.
- Although these luxury vinyl planks are water-resistant, they are not to be used as a moisture barrier. Your subfloor should be completely dry prior to installation of the vinyl floor (<2,5% moisture degree).
- The final responsibility for determining if the concrete is dry enough for installation of the flooring lies with the floor covering installer.
- Ceramic tile should be made smooth by applying a cementitious overlay such as patching or leveling compound to smooth out grout joints.

Important

Different production runs

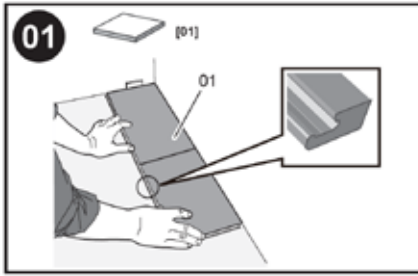
Vinyl floors can have slight color variations in between production runs. Before starting the installation, it is best to check the production run # which is indicated on the label on the short side (end) of the carton. If you find that you have cartons from different production runs, it is highly recommended that you open 2-3 cartons and install a mix of planks from each different production run on your floor. This will result in a more natural looking floor.

Luxury Vinyl Click products installed via the floating method do not require an underlayment. If any underlayment is used, please ensure it is warranted for Luxury Vinyl floating installations. This product is also not to be installed in areas that have a potential for flooding such as saunas or outdoor areas.

Connect panels with care and make sure the click engages well before pushing the plank down. Forcing the planks might cause surface damage (lifting end-joint surface edge) beyond repair.

After installation, make sure to keep the room air conditioned within a temperature range of 10°C to 30°C (50°F to 85°F). Excessively high or low temperatures may cause this vinyl floor to expand or contract and lead to visual defects of the floor that will not be warranted.

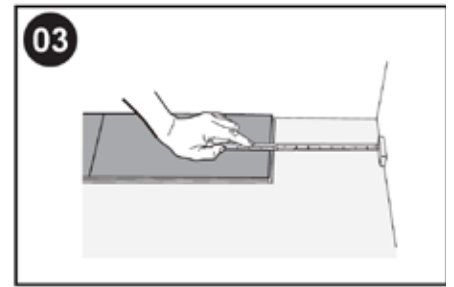
Installation in areas with Sustained Direct Sunlight. Temperatures should be maintained in a home environment not to exceed 30°C (85°F). In cases where the flooring is in direct sunlight for much of the day (Sunrooms, etc.) it is recommended that the planks/tiles be glued down in those spots/areas. The planks are still clicked together as per the floating installation instructions, but an approved Luxury Vinyl flooring adhesive should be used in small direct-sun areas as needed. Be sure to follow the adhesive manufacturer's instructions, including correct trowel size.



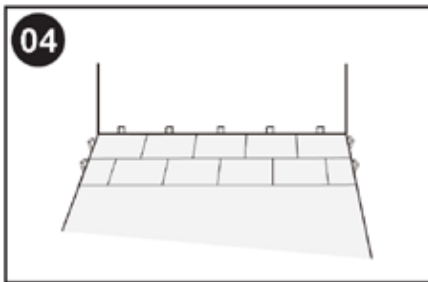
Begin laying your floor at the left hand corner of the longest wall and proceed from the wall with the groove facing out away from the wall. Leave an expansion gap of min 6 mm (1/4") width to the left and position the tile against the wall.



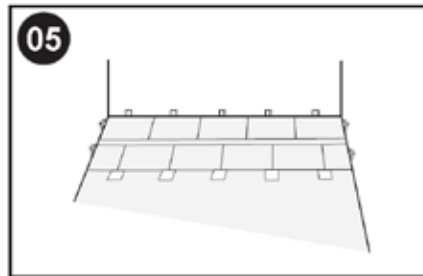
Insert the tongue of the next tile into the groove of the first tile at an angle of 30° to engage the joint and lower to the floor to lock it into place. Repeat for the remaining tiles in the row.



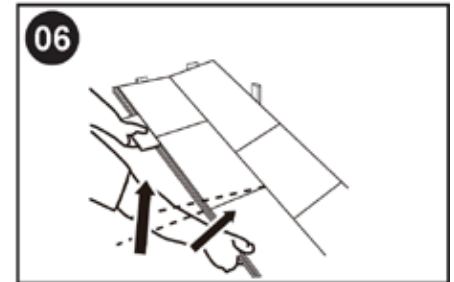
At the end of the first row, leave an expansion gap of min 6 mm (1/4") to the wall and measure the length of the last tile to fit.



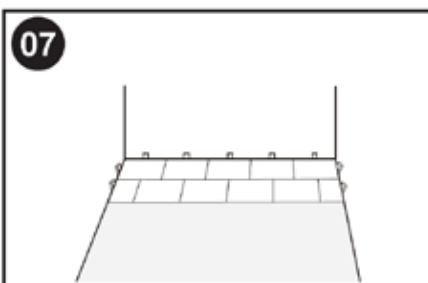
Work on a staggered layout, where the 2nd row is positioned as such that the short side (end) of each tile is situated exactly halfway the long side (length) of the adjacent tile from the previous row. Leave an expansion gap of min 6 mm (1/4") against the wall. Cut the first tile of the 2nd row in 2, take the right half, and situate the cut side towards the wall.



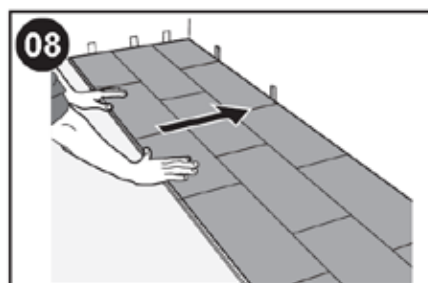
Continue to install the next tiles from the 2nd row by connecting the short sides (ends) of the tiles together until the other side of the room. Use connecting pieces to make sure that the short sides of each tile are aligned properly. Note: make connecting pieces by cutting 1 tile into small pieces of each 10cm (4") long. situate the cut side towards the wall.



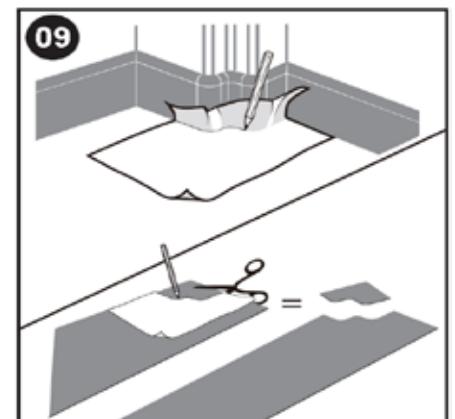
Move the 2nd row entirely towards the 1st row. Then start connecting at one end by lifting the first 2 tiles of the 2nd row in a 30° angle and inserting the tongue into the previous row. Gradually move down the row inserting tile after tile of the 2nd row into the first row.



Once done, verify once more that all tiles from the 2nd row are properly engaged into the first row, after which all connecting pieces can be removed.



After 3 rows. Adjust the distance between the front wall and the installed tiles by leaving an expansion gap of min 6 mm (1/4").



To fit around pipes, door frames etc. make a cardboard pattern as a guide and use this to draw an outline on the tile. Cut to shape and check that it fits before peeling the backing paper. It should fit snugly and should not be forced into place. Be sure to leave a minimum min 6 mm (1/4") expansion gap.

Alternative “Zip line” installation

5a. Continue to install the next planks from the 2nd row by first connecting the short sides (ends) of the planks together until the other side of the room.

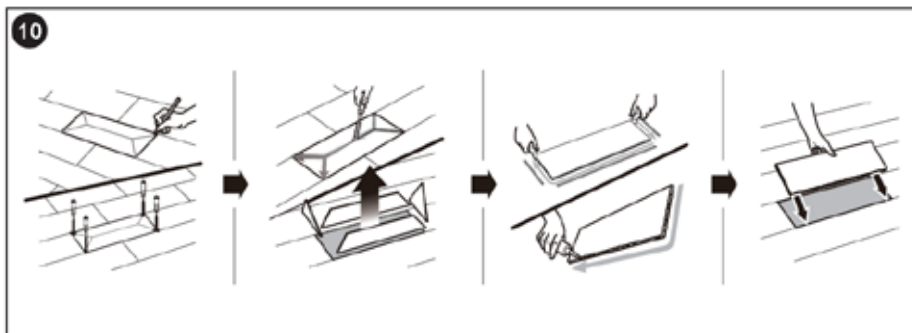
5b. Useful Hint: Use connecting pieces to make sure that the short sides of each plank are aligned properly.

Note: make connecting pieces by cutting 1 plank into small pieces of each 10cm long.

6. Move the 2nd row entirely towards the 1st row. Then start connecting at one end by lifting the first plank of the 2nd row in a 30° angle and inserting the tongue into the groove of the previous row. Gradually move down the row inserting plank after plank of the 2nd row into the first row.

7. Once done, Verify that the 2nd row is properly engaged into the first row, after which all connecting pieces can be removed.

Replacing a Plank



Keep some spare tiles in case any future tile replacement is required. If you need to replace a tile, take a rotary tool and cutting disc or sharp chisel, cut the tile in the middle and then up to each corner. Take care not to cut any under floor wiring or pipe work. Lift the cut pieces out of place. With a spare tile cut the tongue off the short side and groove off from both long and short sides of the replacement tile. Apply a thin bead of glue to the tongues of the remaining tiles on the floor surrounding the tile being replaced (NOTE: a premium vinyl adhesive will suffice). Hold the board at a 45-degree angle. Slip the tongue that is still present into the groove at one end of the hole. Gently lower the board into place in the hole and apply an evenly distributed weight over the tile for 48 hours until the adhesive has dried.

3. Installation over Radiant Heat Subfloors

This Luxury Vinyl flooring may be installed over water-based radiant-heated subfloors according to above mentioned instructions provided the surface temperature of the system does not exceed 81 degrees Fahrenheit (27 degrees Celsius).

IMPORTANT: Due to the speed of sudden temperature changes, which has potential to negatively affect vinyl flooring construction, it is not recommended to install over electrical radiant heating systems. This will not be covered by the manufacturer’s warranty. Only radiant heating system using water is acceptable.

4. Care and maintenance

- Sweep or vacuum daily using soft bristle attachments.
- Clean up spills and excessive liquids immediately.
- Damp mop as needed and use cleaners recommended for no-wax vinyl floors.
- Protect floor from constant direct sunlight.
- Use proper floor protection devices such as felt protectors under furniture - and a mat at entrance ways.
- Make sure pets have nails clipped regularly.
- Do not use abrasive cleaners, bleach or wax to maintain the floor.
- Do not drag or slide heavy objects across the floor.