



DOORS & MOULDINGS





Providing superior building products, dedicated customer service, and support since 1903. Badger's commitment is uncompromised, and the materials that we select are of the highest quality in the industry. Discover our doors and mouldings collection and choose from endless combinations of options.



4	built to last
5	packaging
6	wood species
7	stain & paint colors
10	interior doors
12	Koch flat & raised panel wood doors
14	flat panel MDF doors
15	additional wood door configurations
16	commodity wood doors
17	TrimLite primed panel doors
18	Masonite molded panel doors
20	flush doors
21	glass doors
22	pantry doors
22	MDF full lite with modern sticking
23	louvered doors
25	pocket door frames
26	custom millwork
30	statement & barn doors
32	levers, knobs & hinges
34	mouldings
48	stair parts
64	door handing
65	standard install specs
68	molded panel doors design & size options



BUILT TO LAST

Quality materials and handcrafted details come together in the production process, carefully hand-assembled and packaged, ready for delivery. This unique balance of automation and skilled hand-craftsmanship is one of the things that sets Badger apart. The end result - Badger millwork is designed to deliver superior performance, long-lasting durability and beauty, low maintenance and easy installation.

EFFICIENT PACKAGING

TAKING DOOR PACKAGING TO THE NEXT LEVEL

same superior palletizing with **added features & benefits**

- better packaging and protection from manufacturing, to transportation, to delivery, to installation
- packaging with the end user in mind - premium protection, ease of use, ease of removal for installation

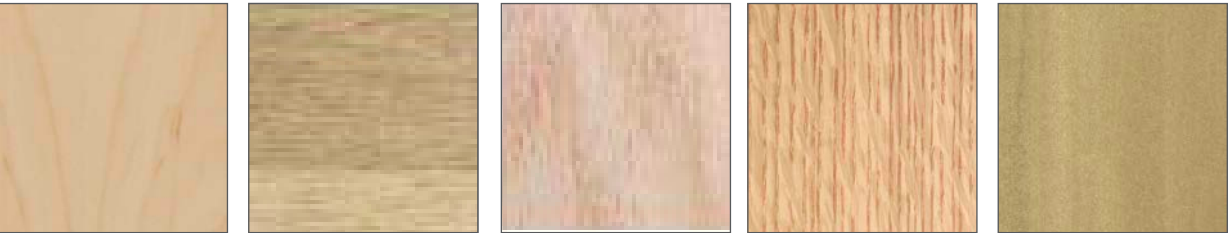


no more broken jamb corners / bottoms

- upper packaging corners made to protect and install right with the door - no need to remove them
- bottom guides without staples in the bottom of the jamb - no more OSB, trim or scrap to clean away
- staples on the side of jamb to avoid bottom jamb damage and blowout
- cardboard sleeves to protect door and jamb finish



WOOD SPECIES



Maple
subtle uniform grain pattern

White Oak
distinct grain pattern & variation

Red Oak
distinct grain pattern & variation

Quarter Sawn Oak
straight grain & dramatic flecking

Poplar
tight grain & even texture



Pine
light/dark grain pattern

Knotty Pine
knots & moderate grain pattern

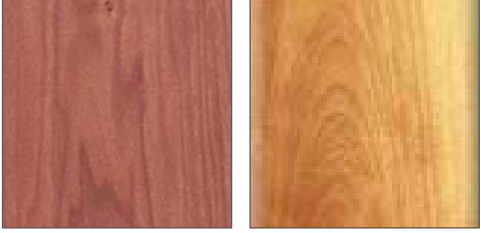
Hickory
fine & contrasting grain pattern

Knotty Alder
knots & fine grain pattern

Clear Alder
fine grain pattern

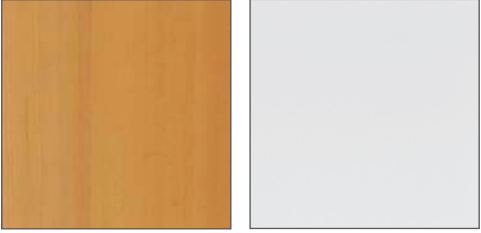


3 panel flat craftsman interior doors in Oak prefinished in Diesel



Cherry
fine & tight grain distinctive markings

Birch
tight & heavy grain pattern



Hemlock
fine & straight grain pattern

Primed MDF/Moulded
composite wood primed

Due to the development of distinctive grain patterns, mineral streaks, and color may vary. The color, grain and texture variations that develop are what makes wood unique and are a part of the intricate beauty of fine hardwoods. The unique characteristics of woods are natural and neither the manufacturer nor the dealer can take responsibility for the conditions described. Color and stain samples do not always give the true representation of the color you will get.

STAIN & PAINT COLORS

CORE STAIN COLORS

colors shown on Maple



Clear

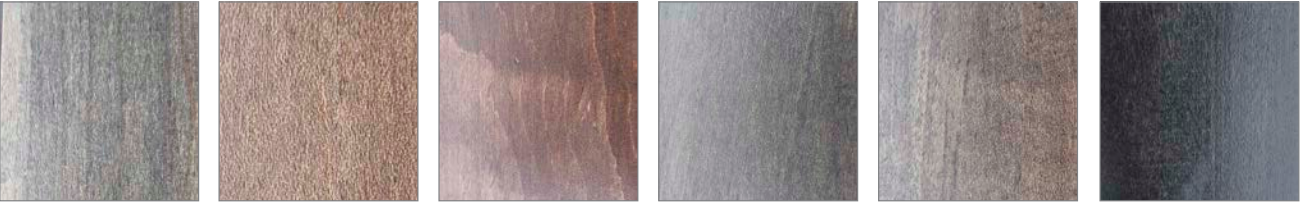
Snow

Gold

Hazelnut

Butterscotch

Nadia



Smoky Nut

Rue

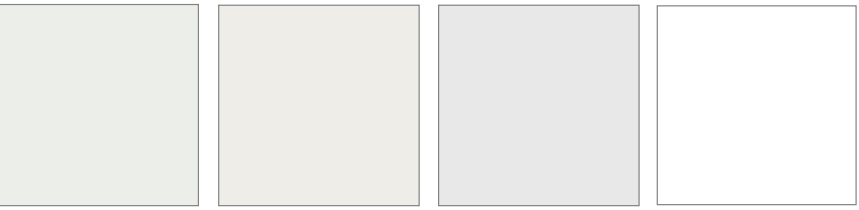
Roasted Brown

Diesel

Chocolate

Raven

CORE PAINT COLORS



Extra

Pure

Badger White

Snowfall



Bound

Ala

Rushed

Isty



Cada

Derson

Bent

Putty



Greystone

CUSTOMIZE YOUR COLOR

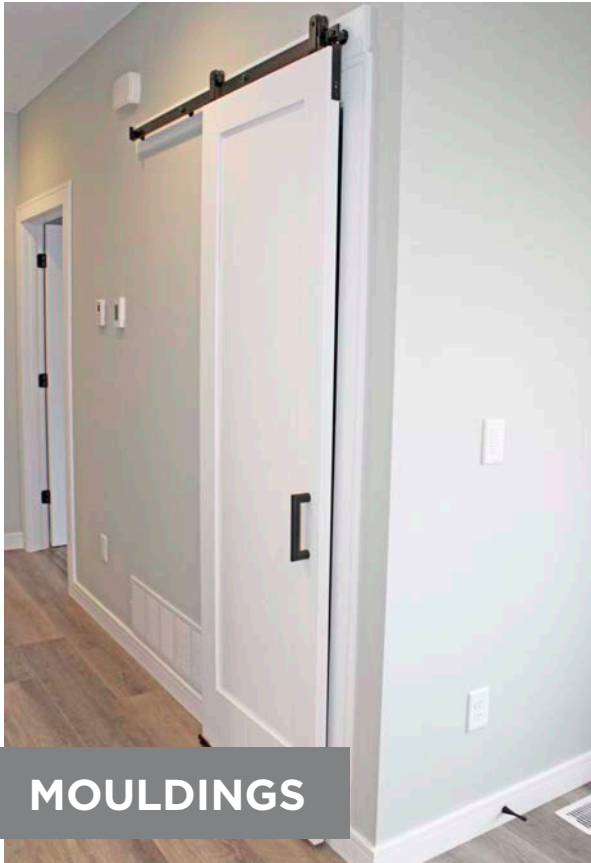
Can't find the right color? Get the right color with customized color matching available to match almost any sample provided. Our color experts are committed to creating your perfect color. Explore the endless possibilities with Badger.

Color samples shown on oak. Due to printing limitations, actual colors may vary slightly from those shown. Please refer to a color sample for accurate colors. Final product may vary slightly.



INTERIOR DOORS

5 panel equal interior doors in Rustic Maple prefinished in Clear, Cotswald glass, trim in Diesel



MOULDINGS

modern craftsman trim B1088 9/16" x 4" square base with backout, Koch MDF 1-panel prefinished white



STAIR PARTS

T60 & T61 balusters and 6910 handrail, prefinished in a custom color



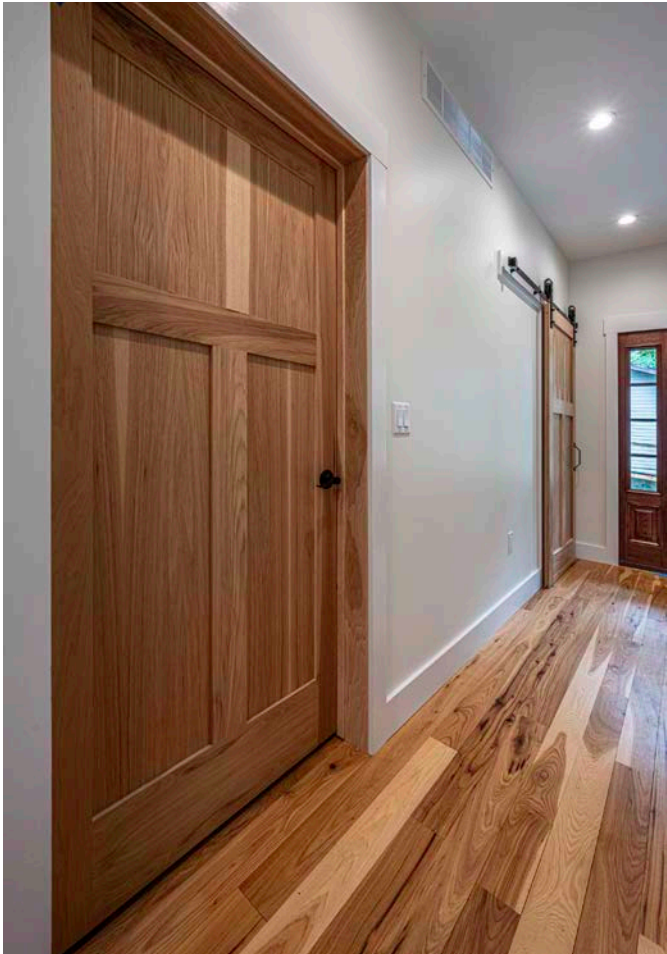
Enjoy a complete
interior millwork
system that
works together

3 panel craftsman interior doors in Poplar prefinished in a custom color (Black Pepper), 6010 handrail, 1-1/4" square balusters and 960 newels prefinished in a custom color (Black Pepper)

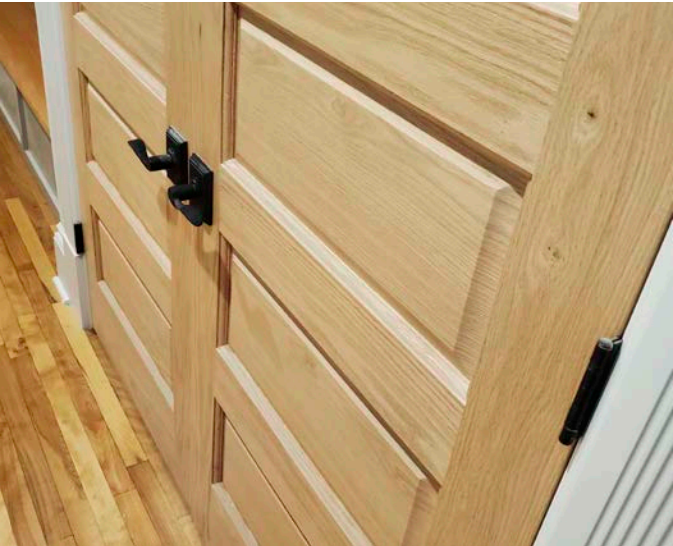


Masonite Logan interior door

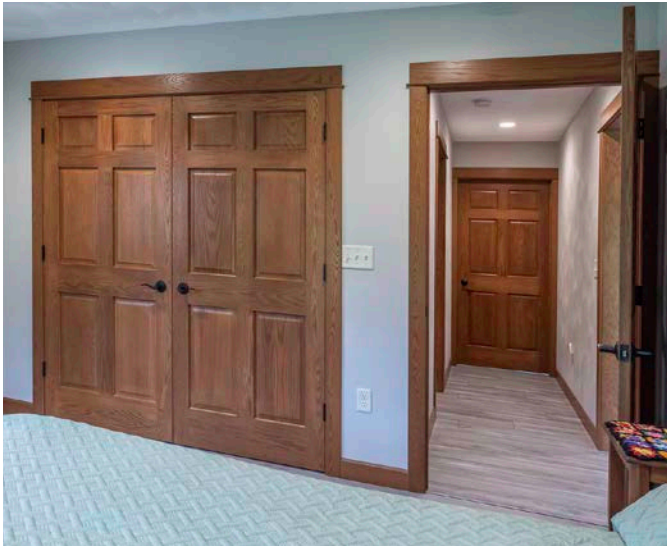
INTERIOR DOORS



flat 3-panel craftsman interior door in Hickory prefinished in clear



4 panel raised interior doors in Red Oak prefinished in Clear



6 panel raised interior doors and trim in Maple prefinished in a custom color



Koch MDF 2-panel interior doors prefinished White



FLAT PANEL WOOD DOORS



standard
profile: 8315
3/8" veneered flat panel

S

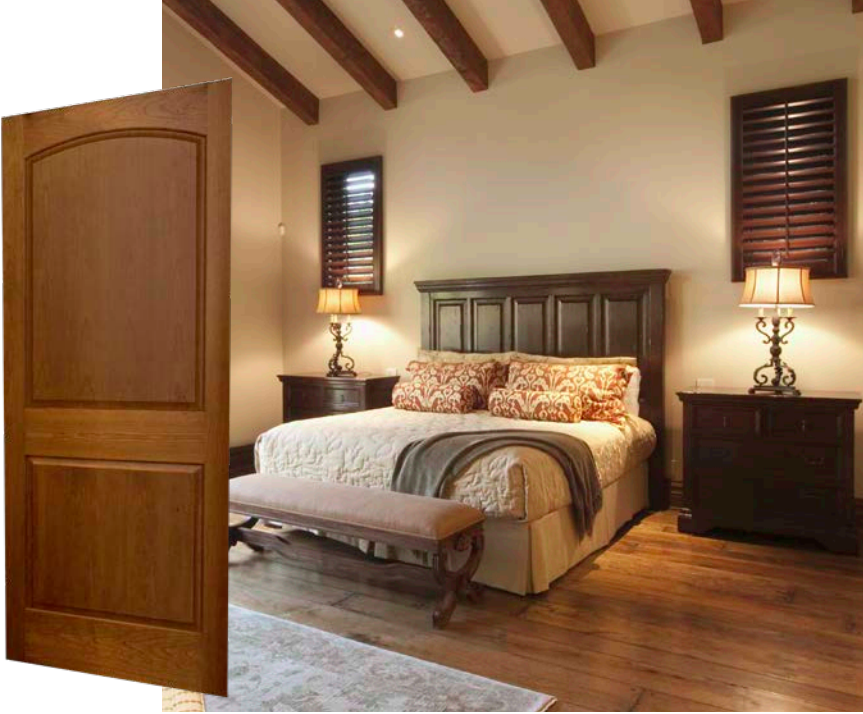


RAISED PANEL WOOD DOORS



profile: 5282
3/4" veneered raised panel

S



1 panel flat
SL-10
MDF

S



2 panel flat
SL-20
O, M, R, MDF

S



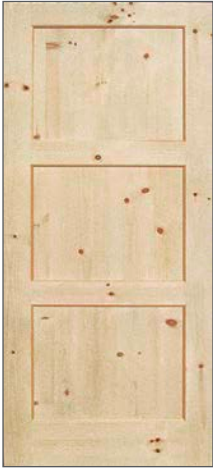
2 panel arch plank flat
SL-20-VA
KA

S



3 panel craftsman flat
SL-34
O, M, R, H, KP, KA, RO, MDF

S



3 panel flat
SL-30
MDF

S



2 panel raised
SL-20
R

S



2 panel arch raised
SL-20A
O, M, KA, R

S



2 panel arch plank
raised
KP

S



4 panel raised
SL-40
R, O

S



6 panel raised
SL-60
O, M, R, H, KP, P
Pine is a double hip - not like 5282

S



3-panel equal interior doors in Maple prefinished in clear



3 panel flat
SL-35



4 panel flat
SL-45



5 panel flat
SL-52
R, MDF

S



American-Made quality

Stiles and rails are edge glued and have a lag bolt assembly to ensure long-term structural integrity. Lag bolt construction is a signature feature of Koch Doors. Bored through door edges to secure stiles and rails, these long metal bolts are far stronger than the wood dowels used by other manufacturers. Matching wood plugs are inserted to cover the boring hole.



2-panel arch plank in Knotty Pine prefinished in Rue

available species:

red oak, knotty oak & white oak
1/4 sawn red & 1/4 sawn white oak
maple & rustic maple
cherry & rustic cherry

alder & knotty alder
pine & knotty pine
hickory & knotty hickory
white poplar, SG poplar & PG poplar

birch
walnut
mahogany
ash & black ash

sapele
doug fir
lyptus
beech

available in 1-3/8" & 1-3/4" thickness
all styles available in 6/8, 7/0 & 8/0 heights

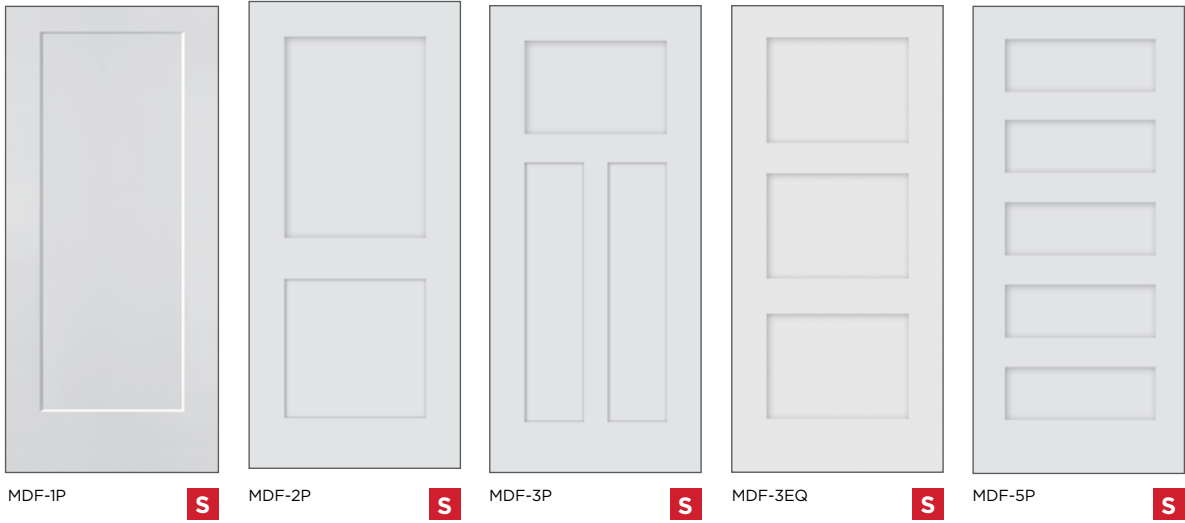
stock

Oak = O
Hard Maple = M
Pine = P
Poplar = R

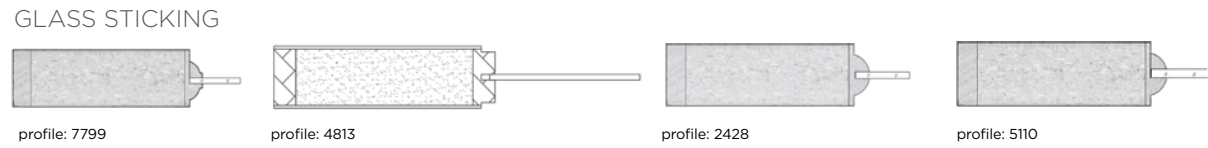
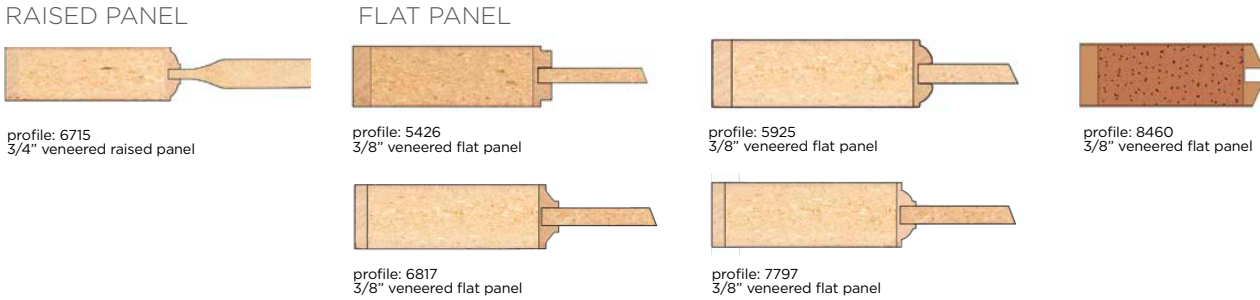
Knotty Alder = KA
Knotty Pine = KP
Rustic Oak = RO
MDF = primed MDF

Hickory = H
Cherry = C

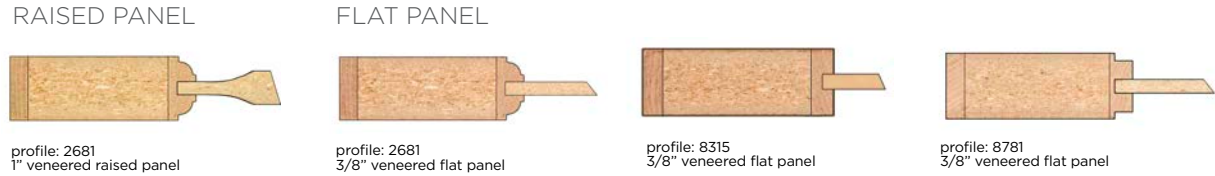
FLAT PANEL PRIMED MDF



NON-STOCK 1-3/8" STILE PROFILES



NON-STOCK 1-3/4" STILE PROFILES



Available veneers include: Red Oak, Ponderosa Pine, Poplar, Birch, Cherry, Mahogany, Maple, Douglas Fir, Hickory, Walnut, Ash, Knotty Alder and more.
More sticking/panel options see badgerlax.com

WOOD DOOR CONFIGURATIONS



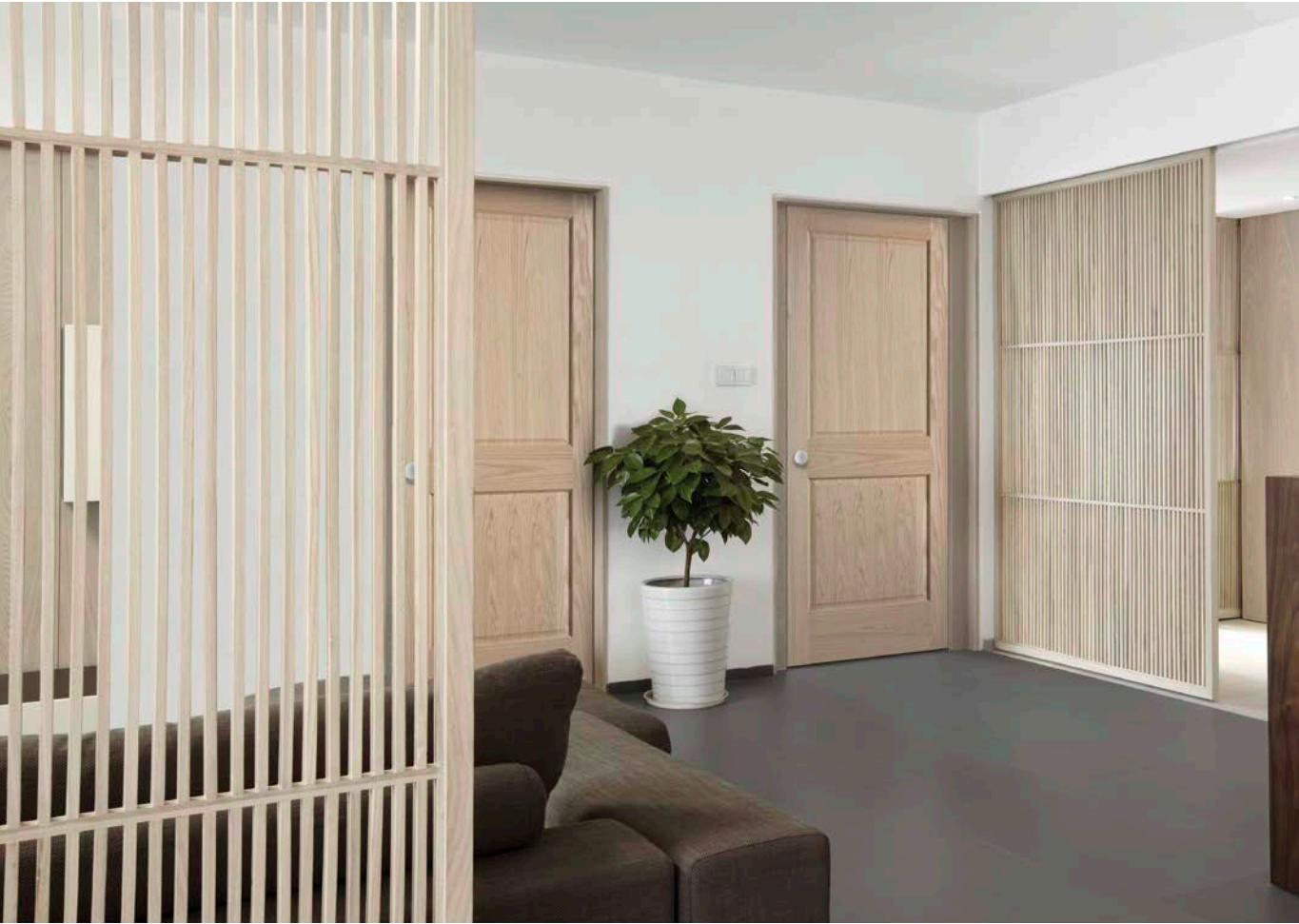
Available in raised and flat panel.
All styles and species available in fire-rated.

Custom designs available.

WOOD COMMODITY DOORS



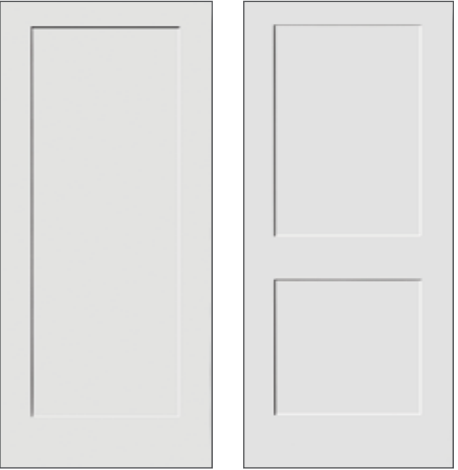
2 panel raised O, R **S** 2 panel flat R **S** 3 panel flat craftsman O, M, R, KA **S** 6 panel raised O, P, KP **S**



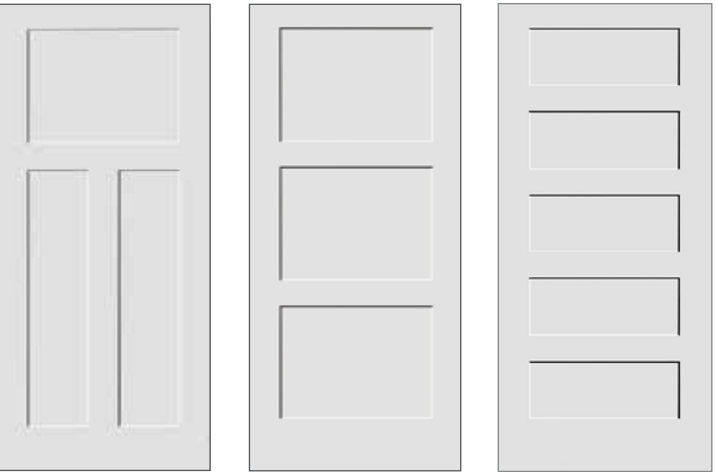
Oak = O
Hard Maple = M
Pine = P
Poplar = R
Knotty Alder = KA
Knotty Pine = KP
Rustic Oak = RO
MDF = primed MDF
Hickory = H
Cherry = C



TRIMLITE PRIMED PANEL DOORS



1 panel flat 8401 **S** 2 panel flat 8402 **S**



3 panel flat craftsman 8403 **S** 3 panel flat equal 8433 **S** 5 panel flat equal 8405 **S**

6/8 1-3/8" SHAKER PANEL DOORS

sizes: 1/6 x 6/8, 2/0 x 6/8, 2/4 x 6/8, 2/6 x 6/8, 2/8 x 6/8, 3/0 x 6/8, 3/0 x 7/0* (7/0 not stock in 1 panel flat or 2 panel flat)



2 panel raised OV22 **S**

6/8 1-3/8" RAISED PANEL DOORS

sizes: 1/6, 2/0, 2/4, 2/6, 2/8, 3/0 & 7/0

thickness: 1-3/8" • doors: 1/6, 2/0, 2/4, 2/6, 2/8 & 3/0 • height: 6/8 • panels: 1/2" flat panel (1-3/8" door) • door stiles: 4-7/16" top rail: 4-5/16" • cross rails: 4-3/8" • lock rail: 7-3/8" • door bottom rail: 9-3/8" • warranty: 5 years



MOLDED PANEL DOORS

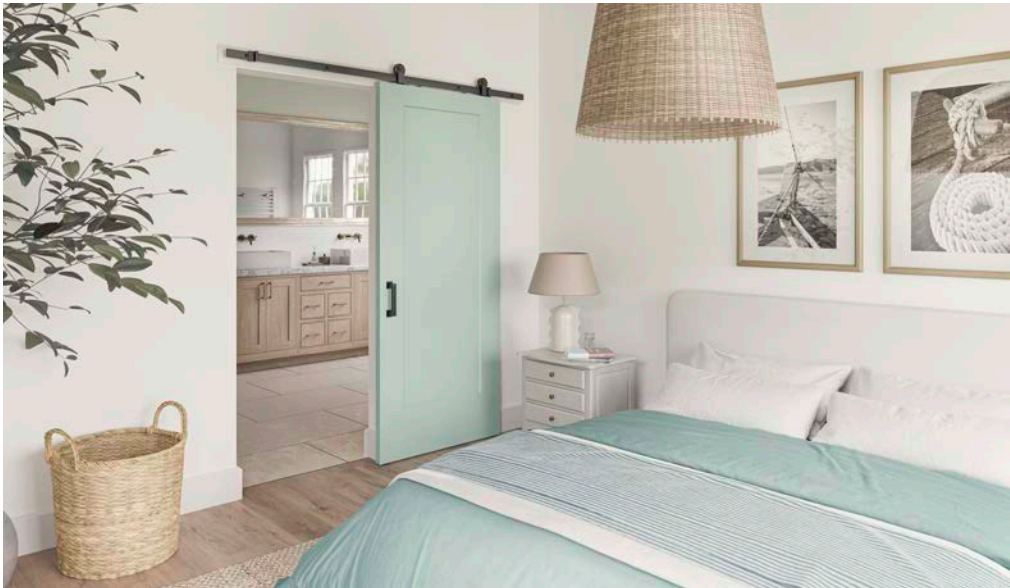
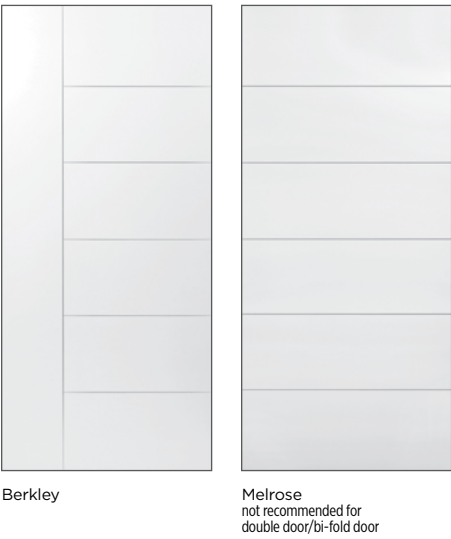
slabs available in solid and hollow core
all bifold doors available in hollow core only



HERITAGE® SERIES



WEST END COLLECTION®



Masonite Lincoln Park interior door



Masonite Livingston interior door

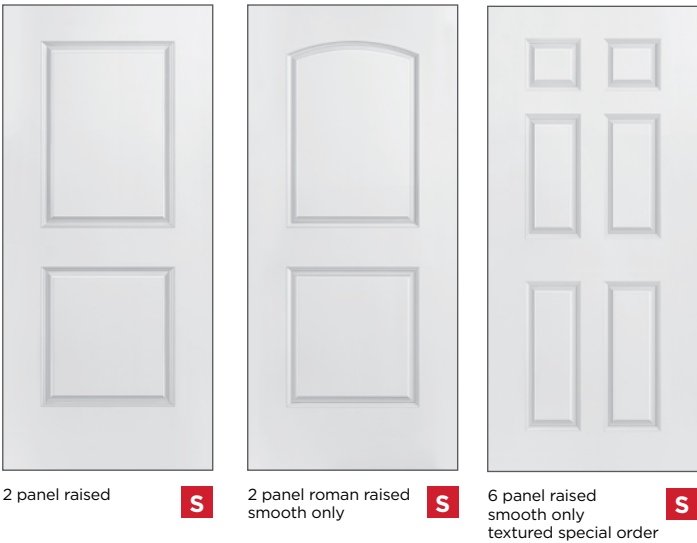


Masonite Melrose interior door

SELECT™ SERIES



CLASSICS™ SERIES



Masonite Riverside interior door



Masonite 2-panel roman raised interior door

MAKE SOLID CORE THE STANDARD

- all bifold doors available in hollow core only
- solid core doors have 70% more sound dampening material than our hollow doors
- offers the durability, heft and feel of real wood
- engineered from wheat straw, an annually renewable resource

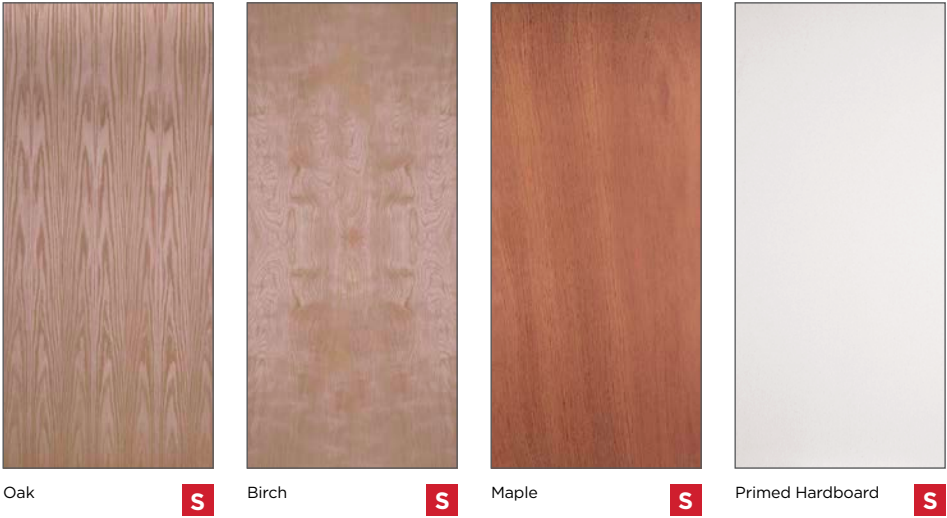
slabs available in solid and hollow core
all bifold doors available in hollow core only



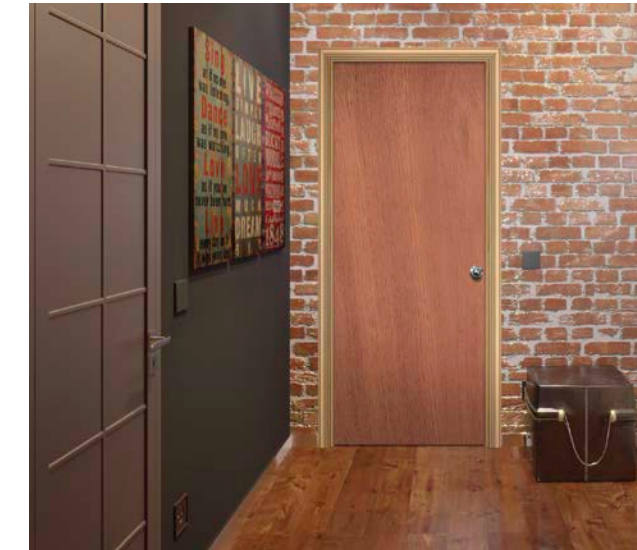
FLUSH DOORS

A perfect option for small budget renovations offering the beauty and refinement of an authentic woodgrain finish.

HARDBOARD & WOOD VENEER FLUSH DOORS



Available in solid and hollow-core construction in 1-3/8" or 1-3/4" thickness. Fire-rating available in 1-3/4" thickness.



Masonite Maple flush interior door

PREFINISHED FLUSH DOORS



Masonite primed hardboard flush interior door

GLASS DOORS

Pairing an interior door with decorative textured glass provides privacy while still allowing the transmission of light. Clear glass also available.



9-lite prairie poplar interior door with acid etch glass prefinished in a custom color 1-panel glass interior door prefinished in white SL-5205 in Maple Cotswald glass prefinished in Clear



PANTRY DOORS

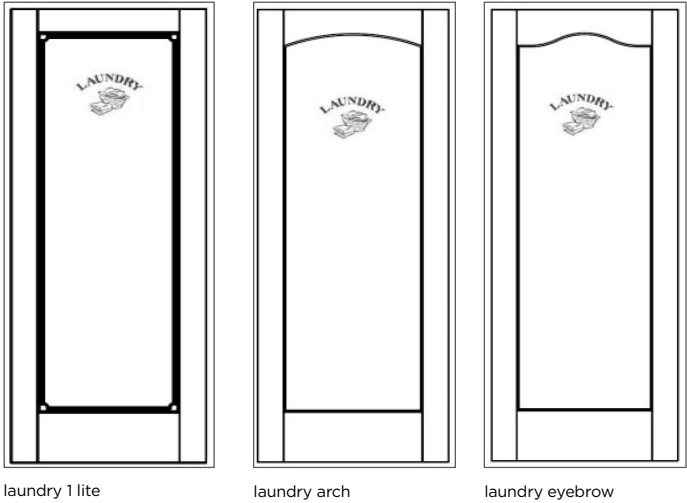


PRIMED MDF FULL LITE
WITH MODERN STICKING



- Stock options available in 2/0, 2/6, 2/8, and 3/0 wide by 6/8 high. Other sizes available Special Order
- Full lite primed doors are ready to ship in all 3 glass styles
- Applied simulated divided lite options in all 3 glass styles available on quick ship
- Custom SDL options available
- Oak, Maple, Poplar, and many more species available special order
- Slight easing on the SDL avoids the paint separation look at the meeting rail

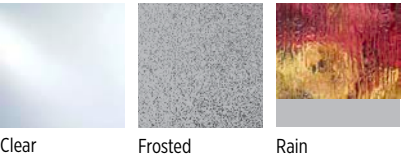
LAUNDRY DOORS

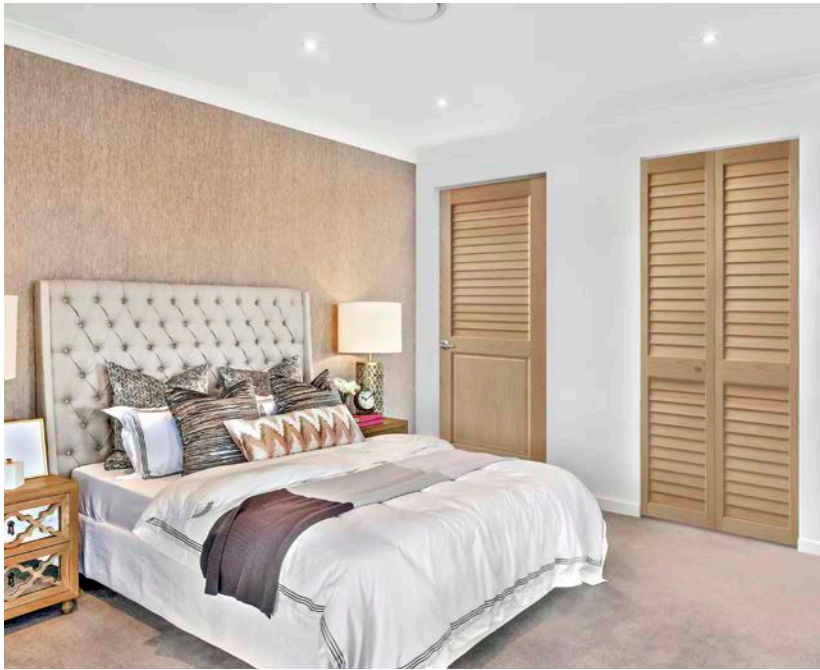


SDL MOULDING



GLASS





LOUVERED DOORS



Louver/Louver



SL-20-LP



Louver Panel



SL-35-L2P

Versatile louvered doors can be used in a variety of settings. Stiles and rails are proportioned to match panel door line for a consistent look. Available in raised or flat panel, all specie options and in 1-3/8" or 1-3/4" doors.

POCKET DOOR FRAMES

Pre-fabricated pocket door frames can be ordered in custom sizes and built to the opening.

- Pre-fab frame
- Fast installation
- 125 lb capacity
- 1 3/8" doors
- Stock widths
6/8: 2/0, 2/4, 2/6, 2/8, 3/0



1000 BU Series
AF 2710
pocket frame

- 125 lb cap, 1 3/8" thick doors, 3/0 width
- Knocked-down, boxed, assemble at jobsite



Masonite Logan interior door

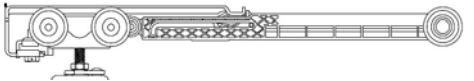
NEW SOFT CLOSE KIT FOR POCKET DOOR FRAMES

Badger item #SOFTCLOSEKIT to be used with in stock pocket door frames

Use 1 kit for soft close or use 2 kits for both soft open and close

SPECS

- Weight rating available doors up to 125 lbs
- High quality acetate ball bearing 3-wheel trolley and hanger system
- Kit includes the soft close mechanism, the soft close trigger/actuator Arm, trolley, door hanger plate with steel catch

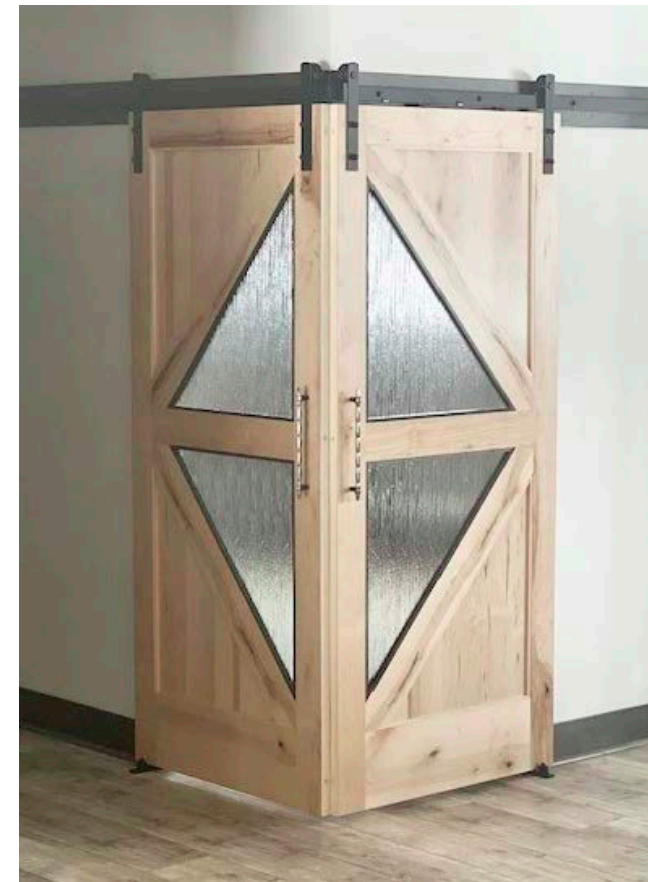




CUSTOM MILLWORK

At Badger, we offer handcrafted custom millwork. Whether you have a renovation or restoration project requiring a match, or a new custom project that needs something to capture unique style, we cater to original designs. Specialty woods, materials, finishes, sheens, special effects all allow the ability to create a one-of-kind style. These materials and finish options add to the hand-finished characteristics of each piece.

Since 1903, Badger has been manufacturing custom products to fit many applications. The tradition continues with millwork. With over 100 years of custom woodworking experience – skilled and passionate craftsmen offer flexibility of custom millwork solutions. Many of our customers have come to learn and enjoy the ability to customize a project resulting in a quality prefinished product delivered ready-to-install.



SAVE TIME & MONEY
WITH BADGER'S
CUSTOM MILLWORK

handcrafted
one-stop shop offering:

- barn door customization
- statement doors
- crossheads/toppers
- transoms
- interior door & sidelite systems
- window stools
- custom finished boards
- and much more



CROSSHEADS / TOPPERS

Decorative door toppers, also known as crossheads, sit gracefully above a doorway or window and add a unique touch to your home.



Badger custom millwork department has many styles of crossheads and toppers to fit all your customer’s needs.

- Come with returned finished ends specifically made to fit each door of the project
- Cutting install trim time in half - no need for extra work from the builder, and no need for time consuming miter cuts on casing
- Just square cut your casing sides and add the topper above for a beautiful look that makes a statement



IM1-CH141



IM1-CH142



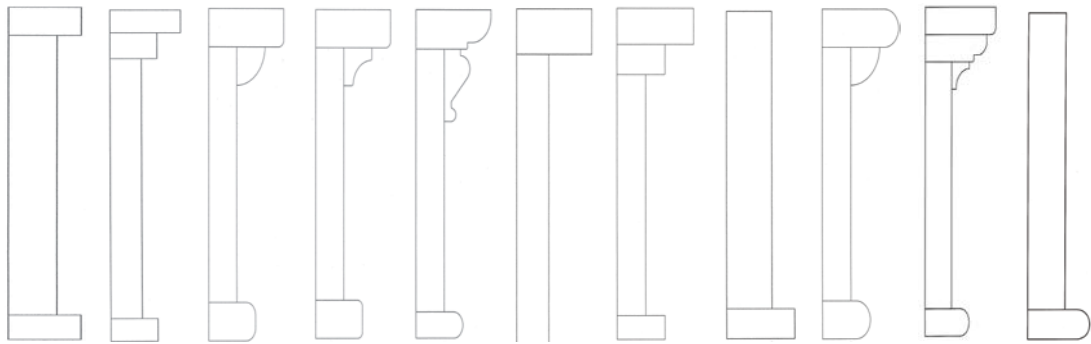
IM1-CH143



IM1-CH144



IM1-CH145



IM1-CH141 IM1-CH142 IM1-CH143 IM1-CH144 IM1-CH145 IM1-CH146 IM1-CH147 IM1-CH148 IM1-CH149 IM1-CH153 IM1-CH158

MITERED CASING OPTIONS

With skilled labor for trim work becoming harder and harder to come by, let Badger’s Custom Millwork department do the work for you. By taking advantage of Badger’s casing set options your customers will save big on installation time, allowing them to move quicker and take on additional jobs!

CHOOSE FROM 3 DIFFERENT CASING OPTIONS:



MITERED & BUNDLE

Pre-mitered casing for each door size on the order ready for assembly and installation. No need for time consuming measurements and cuts!



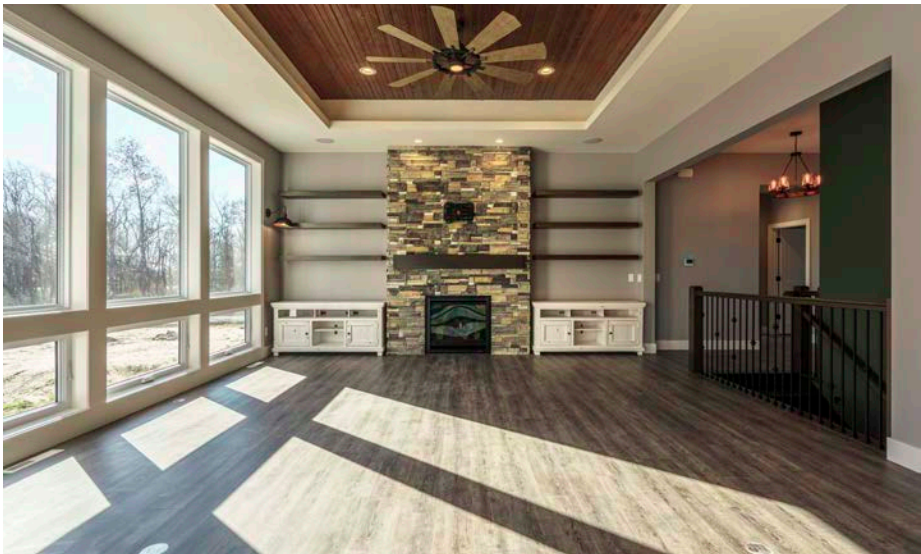
MITERED & ASSEMBLED

Pre-mitered casing sets that are sized for each door, assembled at the miter, and carefully packaged for shipping. Ready to install at the jobsite!



MITERED & APPLIED

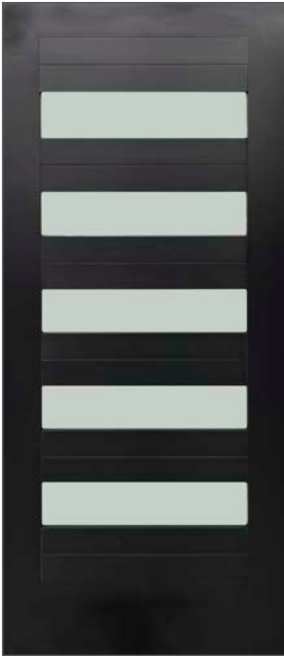
Pre-mitered casing sets with one set applied to one side of the door. Simply slip the pre-hung door into the rough opening with the casing already applied to one side of it. The pre-mitered and assembled set for the other side makes installation a breeze!



available in all casing species including MDF

CUSTOMIZED STATEMENT DOORS

- Avoid the extended lead times of special custom orders
- Dream up a design to make your doors stand out from the norm
- Add trim boards for X-bar or K-bar style barn doors
- Add metal panels great for statement focal point doors such as pantry doors
- Add perimeter trim boards to give the door an added level of character



explore endless possibilities

All bar designs will be on both sides of the door unless otherwise specified. State mirror image or non-mirror image on all K-bar (or Z-bar) on opposite non-mirror image K-bar (or Z-bar) the same on both sides



Masonite Lincoln Park interior door



Masonite Logan interior door

BARN DOORS

Barn doors are versatile to divide any space while adding stylish character. Choose from rustic and traditional, to bold and modern.

BARN DOOR HARDWARE

Choose from 3 stylish track options. Available in matte black and satin nickel finishes.

For openings up to 36", double door applications require 2 kits. For use with 1-3/8" solid core flush, solid core molded and wood doors (not to be used with hollow core doors). Kit contains everything needed for concrete wall application.

FINISHES



matte black



satin nickel

DESIGNS



bent strap



straight strap



top mount

KIT



- | | | | |
|---|--|---|------------------------------------|
| 1 | instruction guide | 2 | #8 floor screws (4.2mm x 35mm) |
| 1 | rail | 2 | 1/4 floor anchors (6mm) |
| 2 | straps | 2 | internal floor-mounted door guides |
| 5 | wall spacers | 1 | wall-mounted door guide |
| 2 | anti-jump blocks | 2 | floor-mounted door guides |
| 1 | right stopper | | |
| 1 | left stopper | | |
| 5 | 5/16 carriage bolts (8mm x 60mm) with anchor | | |
| 5 | 5/16 wall screws (8mm x 90mm) | | |

LEVERS & KNOBS

From traditional to contemporary, choose from various designs and finishes to match your style. Various lever and knobs available in passage, privacy, dummy pulls and entry.

LEVERS

Sacramento

Avila

Latitude with Collins

Flair with Addison

OUTSIDE HANDLE SETS

Plymouth

Camelot

Century

KNOBS

Bowery with Upland

Plymouth

Orbit

Andover with Addison

STOCK LEVERS, KNOBS & KEYPADS

Accent
619, 609, 716

Latitude
622, 619

Merano
619, 622, 716

Georgian
619, 716

AVAILABLE FINISHES

505 / 605
Bright Brass

606
Satin Brass

609
Antique Brass

613 Oil
Rubbed Bronze

619
Satin Nickel

620
Antique Pewter

621 Distressed
Nickel

622
Matte Black

625
Bright Chrome

626
Satin Chrome

716
Aged Bronze



Due to printing limitations, actual colors may vary slightly from those shown. Please refer to a color sample for accurate colors. Final product may vary slightly.



TOUCHSCREEN HANDLESETS

**SCHLAGE SENSE
SMART DEADBOLT**
Your iPhone just became your new key. Get access to your home from your front porch or your pocket.

SCHLAGE CONNECT
Combining advanced features and compatibility with your home automation system, this door lock allows you to control your home from anywhere.

SCHLAGE TOUCH
If you're a homeowner with an active lifestyle, then Schlage Touch can help simplify your day by eliminating the hassle of keys entirely.



PLAIN & BALL BEARING HINGES

AVAILABLE FINISHES

Antique Brass

Bright Brass

Satin Nickel

Dull Chrome

Antique Nickel

Polished Chrome

Colonial Bronze

Matte Black

- Ball bearing hinges provide a smooth quiet close without hinge dust accumulating
- Spring hinge available
- Available in a wide selection of finishes
- Standard ball bearing hinges on all solid core doors

MAGNETIC CATCH

Magnetic catches are available upon request as an upgrade from roller/ball catches.

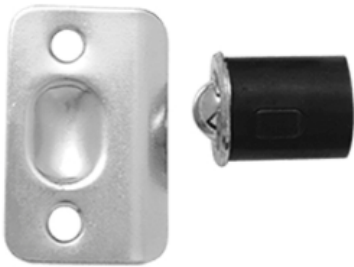


Silver

Black



BALL CATCHES





2-panel arch plank in Knotty Pine prefinished in Rue

MOULDINGS



5-panel equal interior door in Maple Cotswald glass prefinished in Diesel



Masonite 2-panel raised interior doors prefinished White



5-panel equal raised interior door in Maple prefinished in Clear



Koch MDF 2-panel interior doors prefinished White

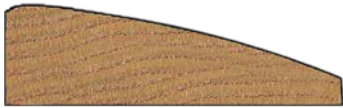
CASING

Used around door and window openings.

RANCH



9/16" x 2-1/4"
Menzner MC-6
1/2" x 2-1/4"
C1033 - like Menzner MC-8
Ferche F113



11/16" x 2-1/4"
316



9/16" x 2-1/4"
Menzner MC-1
1/2" x 2-1/4"
Menzner MC-1A

COLONIAL



11/16" x 2-1/4"
356



1/2" x 2-1/4"
Menzner MC-2A
Ferche F118



1/2" x 2-1/4"
C131 - like Menzner MC-13
Ferche F115



19/32" x 2-1/4"
356



5/8" x 2-1/4"
366M



17/25" x 3-1/4"
C131



9/16" x 2-1/4"
C131 - like Menzner MC-356HP



5/8" x 2-3/4"
Menzner MC-723



3/4" x 3-1/4"
Ferche F1430



9/16" x 3-1/4"
C1146 - like Menzner MC-40
Ferche F134



9/16" x 2-3/4"
Menzner MC-71
(7' 3" only)



11/16" x 3-1/4"
444



11/16" x 3-1/4"
C1298 - like Menzner MC-47
Ferche F131

5/8" x 3-1/4"
444LM

MDF
Oak = O
Hard Maple = M
Pine = P
Poplar = R
Soft Maple = SM
Hickory = H
Knotty Alder = KA
Knotty Pine = KP
Primed Poplar = PP
Primed Pine = PPI



11/16" x 3-1/4"
366



9/16" x 2-3/4"
Menzner MC-77



9/16" x 2-1/4"
Menzner MC-2



11/16" x 3-1/4"
Menzner MC-39
Ferche F132



9/16" x 3-1/4"
Menzner MC-42



11/16" x 3-1/4"
130



s stock

MDF
Oak = O
Hard Maple = M
Pine = P
Poplar = R
Soft Maple = SM

Hickory = H
Knotty Alder = KA
Knotty Pine = KP
Primed Poplar = PP
Primed Pine = PPI
badgerlax.com

HOOKSTRIP CASING

Used around door and window openings.



3/4" x 2-1/4"
Menzner MC-5A
9/16" x 2-1/4"
C151214 - like Menzner MC-5
Ferche F157 **S** O, M, P, KA, R, PP
H



3/4" x 2-1/2" **S** KP
3/4" x 3-1/2" **S** KP



7/16" x 3-1/4"
Menzner MC-34
Ferche F1563
1/2" x 3-1/4"
C151314 - like Menzner MC-34C **S** O, M
Ferche F1544
9/16" x 3-1/4"
Menzner MC-38 **S** KA
C151314 R, PP
19/32" x 3-1/2" **S** 412 MDF
9/16" x 3-1/2" **S** 432J PPI

19/32" x 2-1/4"
L473 **S** MDF
11/16" x 2-1/4"
453 **S** PPI

BACK BAND

A narrow, rabbeted moulding used in conjunction with baseboard moulding and applied to the outside corner and edge of interior window and door casing or along the floor to create a heavy trim look.



3/4" x 1-1/16"
Menzner M-891A
Ferche F194

CLASSIC COLONIAL & FLUTED CASING

Used around door and window openings.



1/16" x 3-1/4"
Ferche F160



11/16" x 3-1/4"
Preferred Hardwoods C1171



MDF
Oak = O
Hard Maple = M
Pine = P
Poplar = R
Soft Maple = SM
Hickory = H
Knotty Alder = KA
Knotty Pine = KP
Primed Poplar = PP
Primed Pine = PPI

MODERN FLAT CASING



11/16" x 3-1/4" x 16'
683 **S** MDF



3/4" x 3"
Menzner MC-67



9/16" x 3-1/4" x 7'6"
C1238 - like MC1613 **S** R, PP
Ferche F1613 PP

CONTEMPORARY GROOVE HOOKSTRIP MOULDING


1/16" depth • 3/4" from one side edge / from top – both case and base




MDF
Oak = O
Hard Maple = M
Pine = P
Poplar = R
Soft Maple = SM
Hickory = H
Knotty Alder = KA
Knotty Pine = KP
Primed Poplar = PP
Primed Pine = PPI

BASE SHOE


A narrow moulding providing a transition between finished floors and walls or cabinets; it protects the base from damage and conceals uneven lines or cracks where the base meets the floor. Shoe moulding may be used in place of quarter round.




1/2" x 3/4"
PH615
Menzner M-101
Ferche200




7/16" x 3/4"
128P



7/16" x 11/16"
WM129



1/2" x 3/4" x 16'
126



1/2" x 3/4"
Ferche F2100

S O, M, R, H
O, M, KA, R
H, PP

S PPI, R

S P

S PPI



SKIRTBOARDS



1/2" x 9-1/4"
845-1A



7/16" x 9-1/4"
846A

S O, R

S O, R

S4S BOARDS



Primed Poplar

1x4	8', 10', 12', 16'
1x6	8', 10', 12', 16'
1x8	8', 10', 12', 16'
1x10	8', 10', 12', 16'
1x12	8', 10', 12', 16'

Raw Poplar

1x4	8', 10', 12', 16'
1x6	8', 10', 12', 16'
1x8	8', 10', 12', 16'
1x10	8', 10', 12', 16'
1x12	8', 10', 12', 16'

Primed Pine

1x4	16' only
1x6	16' only
1x8	16' only
1x10	16' only
1x12	16' only

Maple

1x4	8', 10', 12'
1x6	8', 10', 12'
1x8	8', 10', 12'
1x10	8', 10', 12'
1x12	veneer 16' only

Oak


1x4	8', 10', 12', 16'
1x6	8', 10', 12', 16'
1x8	8', 10', 12', 16'
1x10	8', 10', 12', 16'
1x12	8', 10', 12', 16'

MDF
Oak = O
Hard Maple = M
Pine = P
Poplar = R
Soft Maple = SM


Hickory = H
Knotty Alder = KA
Knotty Pine = KP
Primed Poplar = PP
Primed Pine = PPI

CROWN MOULDING


Used to cover the intersection where the walls and the ceiling meet for a decorative look.



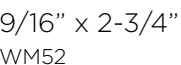
9/16" x 2-1/4"
Menzner M-409
Ferche F608




9/16" x 5-1/4"
46/668




3/4" x 3-5/8"
Ferche F611



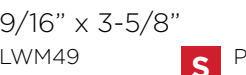
9/16" x 2-3/4"
WM52




9/16" x 4-1/4"
M669



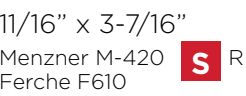
9/16" x 5-1/4"
Menzner M-668



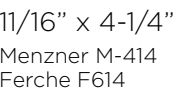
9/16" x 3-5/8"
LWM49



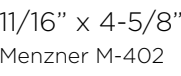
3/4" x 5-1/4"
CR291




11/16" x 3-7/16"
Menzner M-420
Ferche F610




11/16" x 4-1/4"
Menzner M-414
Ferche F614



11/16" x 4-5/8"
Menzner M-402



3/4" x 4"
CR325



9/16" x 1-3/4"
Menzner MBM-6
Ferche F604

S PP

S PP

S P

S R

BED MOULDING

Used where walls and ceiling meet.

COVE

A concave profile used to soften the transition between two planes at right angles to each other. It may be used as a crown around the ceiling or on the inside of a vertical corner as a corner guard.



1/2" x 1/2"
Menzner M-304
Ferche F600



9/16" x 1-3/4"
Menzner M-305
Ferche F605



11/16" x 1-1/8"
WM94



3/4" x 3/4"
PH610
Menzner M-301
Ferche F601



1-1/16" x 5-3/8"
Menzner M-434
Ferche F613



3/4" x 1-1/4"
Menzner M-310
Ferche F602

S M, R, PP, H
O, P

S P

S P, O

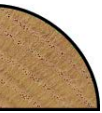
MDF
Oak = O
Hard Maple = M
Pine = P
Poplar = R
Soft Maple = SM

Hickory = H
Knotty Alder = KA
Knotty Pine = KP
Primed Poplar = PP
Primed Pine = PPI

ROUND MOULDING

Quarter round is 1/4 of a full circle rod and may be used as a base shoe or inside-corner moulding. Half round is used along the edge of cabinetry can tie in all the design elements in a room. Full round is rod-shaped millwork used as closet poles, curtain rods and towel bars.

QUARTER ROUND



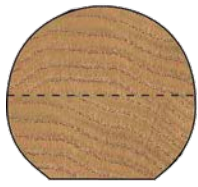
3/8" x 3/8"
Menzner M-202

1/2" x 1/2"
Menzner M-200 **S** O, P

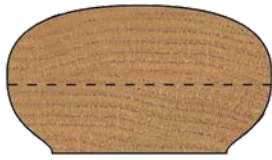
3/4" x 3/4"
PH616
Menzner M-201 **S** M, P, R
Ferche F661

1/4" x 1/4"

WALL RAIL



1-5/8" x 1-3/4"
Menzner M-801 **S** O, M, R
Ferche F901



2-1/4" x 2-1/4"
6042 **S** R

1-1/2" x 2-1/4"
Ferche F904L **S** O

FULL ROUND



1-1/2" x 1-1/2" glued
Menzner M-851
Ferche F921

1-1/4" x 1-1/4"
LWM233 **S** P



STOP

Holds the bottom sash of a double-hung window in place and can also be used as an apron under window stools. In door trim, a stop is nailed to the faces of the door frame to prevent the door from swinging through the frame.



3/8" x 1-1/16"
Menzner MS-20
Ferche F301

3/8" x 1-1/4"
PH751
Menzner MS-11 **S** O, M, P, KA, R
Ferche F305 H, PP, MDF

7/16" x 1-3/8"
Menzner MS-17
Ferche F302



3/8" x 1-1/4"
D1510
Menzner MS-7 **S** O, M, KA, R
Ferche F306 H, P, PP, MDF

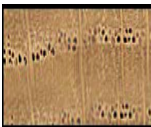
3/8" x 1-3/8"
WM946 **S** P



1/2" x 1-1/2"
Menzner MS-4 **S** O, M, R
wall pocket



3/4" x 1-5/8"
Menzner MS-5
Ferche F313



1/2" x 3/4"
WM254 **S** P



OUTSIDE CORNER

Used to protect corners.



3/4" x 3/4"
Menzner M-702
Ferche F651 **S** P
1-1/16" x 1-1/16"
Menzner M-701
Ferche F652 **S** O



3/4" x 3/4"
Menzner M-704
1-1/16" x 1-1/16"
Menzner M-703
Ferche F655

1-1/8" x 1-1/8"
WM205 **S** P

1-5/16" x 1-5/16"
WM204 **S** P

SCREEN MOULDING

Traditionally used to hold mesh screening into a wood frame, edge trim on shelving or as wood trim for wallpaper.



1/4" x 3/4"
Menzner MSM-7
Ferche F520 **S** P



1/4" x 3/4"
Menzner MSM-8

MULL CENTER & LATTICE

A thin moulding used in lattice work or for a mull center.



1/4" x 2"
Menzner MM-2
Ferche F500D **S** O

1/4" x 2-1/4"
S P

1/4" x 3"
Menzner MM-3C
Ferche F500H

1/4" x 4"
Menzner MM-4
Ferche F500J **S** P

1/4" x 5"
Menzner MM-4I
Ferche F500L

1/4" x 6"
Ferche F500N

1/4" x 1-3/8"
WM267 **S** P

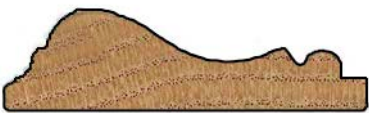
1/4" x 1-3/4"
WM265 **S** P

S stock

MDF
Oak = O
Hard Maple = M
Pine = P
Poplar = R
Soft Maple = SM
Hickory = H
Knotty Alder = KA
Knotty Pine = KP
Primed Poplar = PP
Primed Pine = PPI

PANEL MOULDING & CHAIR RAIL

Panel moulding is used to trim out raised-panel wall construction for a decorative look. Chair rail is applied on the wall about 1/3 of the way up from the floor.



11/16" x 2-5/8"
WM390



3/4" x 2"
Menzner M-555
Ferche F721



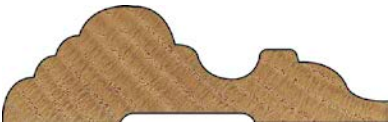
3/8" x 3/4"
Menzner M-500



11/16" x 3"
Menzner M-532
Ferche F722



5/8" x 2-1/2"
Menzner M-504



3/4" x 2-1/2"
Menzner M-519
Ferche F719



3/4" x 1-3/8"
Menzner M-510
Ferche F724



5/8" x 1-1/8"
Menzner M-507

MANTEL MOULDING

Decorative moulding used to accentuate the point where the mantel is attached to the fireplace.



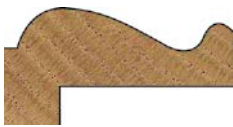
7/16" x 1-3/8"
Ferche F746



3/4" x 1-3/4"
Preferred Hardwoods 924

PANEL CAP

Used as a cap for wainscot.



3/4" x 1-1/2"
Menzner MPC-1

S stock

MDF
Oak = O
Hard Maple = M
Pine = P
Poplar = R
Soft Maple = SM

Hickory = H
Knotty Alder = KA
Knotty Pine = KP
Primed Poplar = PP
Primed Pine = PPI

STAIR PARTS



T60 and T61 baulsters, 6910 handrail prefinished in a custom color



T60 and T61 baulsters, 6910 handrail prefinished in a custom color

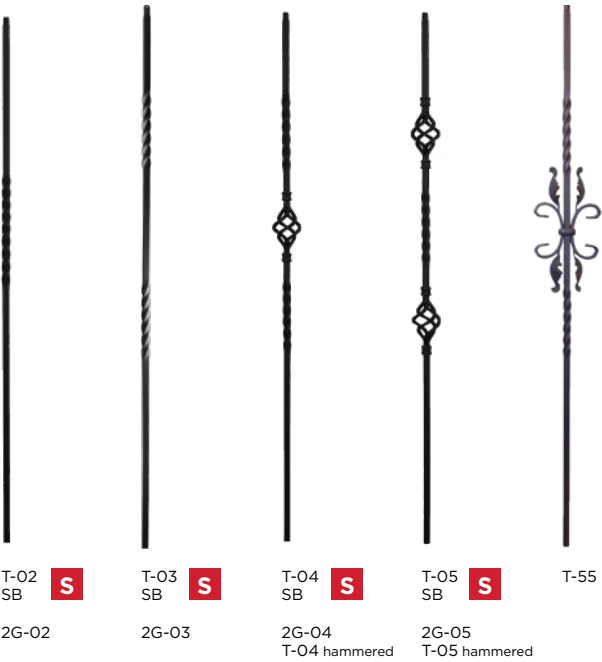


6010 handrail, 1-1/4" square balusters and 960 newels prefinished in Black Pepper



TWIST & BASKET iron balusters

The most popular style, it lends itself to a classic combination of single, double and basket designs.



single twist
double twist
single basket
double basket
butterfly & leaf scroll

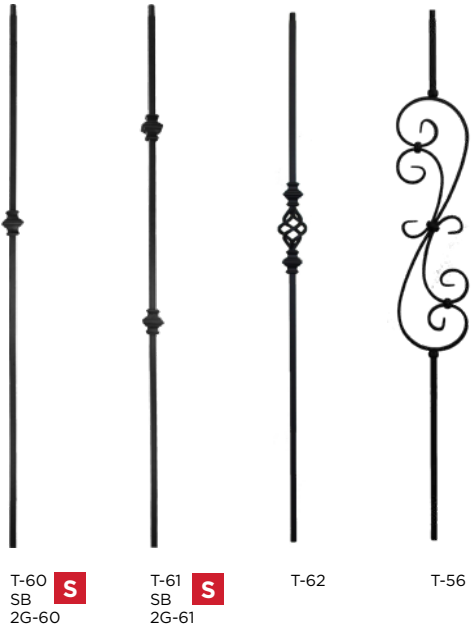
1/2" 5/8"
T-02 2G-02
T-03 2G-03
T-04 2G-04
T-05 2G-05
T-55

IRON FINISHES



KNUCKLE iron balusters

Uniform length of all iron balusters: 43-3/4", including the 3/4" round top.



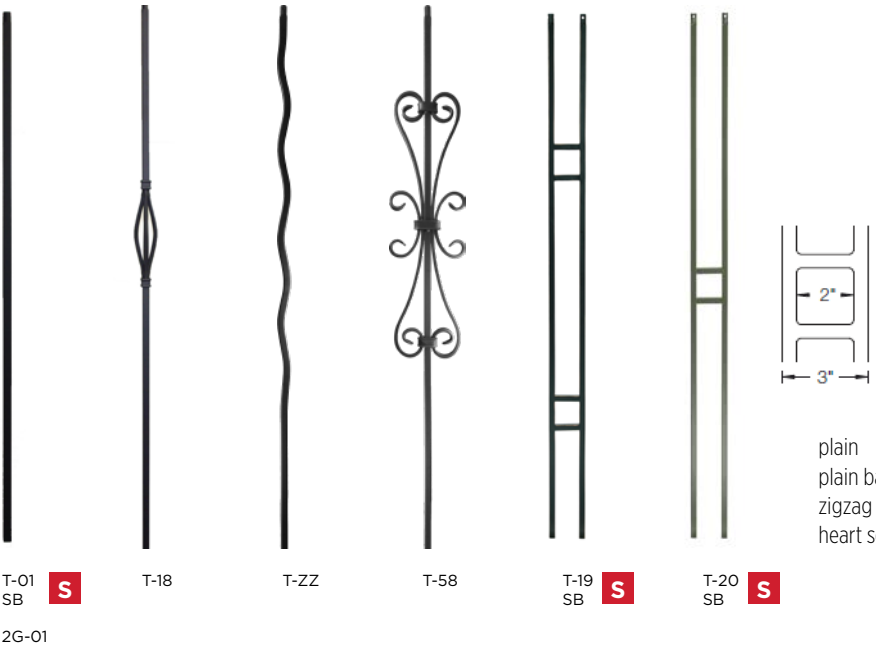
single knuckle
double knuckle
double knuckle
single basket
double basket

1/2" 5/8"
T-60 2G-60
T-61 2G-61
T-62
T-56



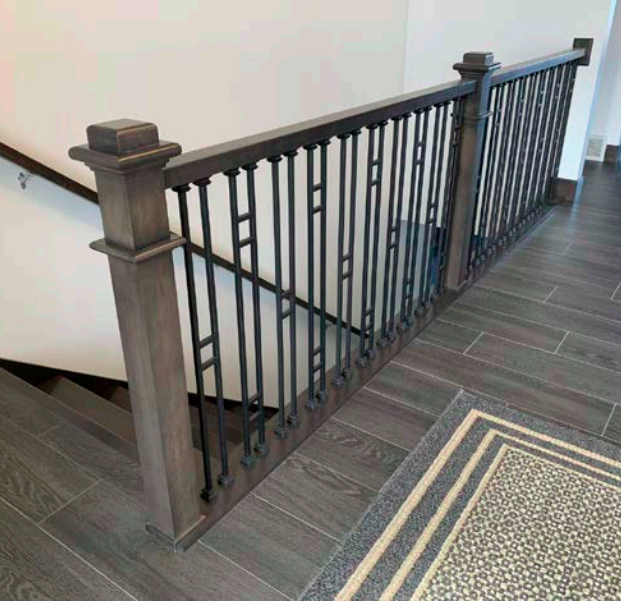
PLAIN & ZIGZAG iron balusters

Simple and contemporary, and complimented by the warmth of wood newels.



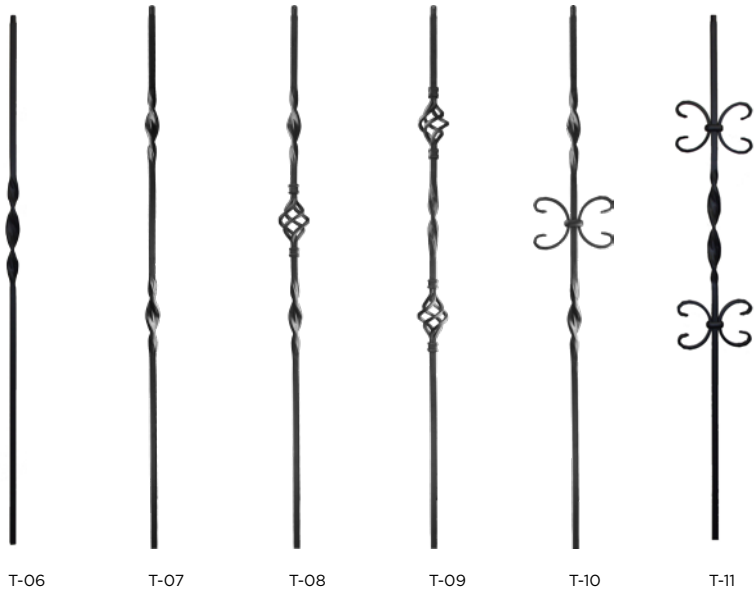
plain
plain basket
zigzag (zz)
heart scroll

1/2" 5/8"
T-01 2G-01
T-18
T-ZZ
T-58



RIBBON iron balusters

Uniform length of all iron balusters 43-3/4", including the round top.



single ribbon
double ribbon
single basket
double basket
single butterfly
double butterfly

1/2" 5/8"
T-06 2G-06
T-07 2G-07
T-08
T-09
T-10
T-11



GOTHIC iron balusters

Available in 1/2” thickness only, showcase its elegance.



1/2”
plain T-40
single knuckle T-41
double knuckle T-42
single basket knuckle T-43
single collar T-45
double collar T-46
single basket collar T-47



TUSCAN iron balusters

Hammered edges give a handmade appearance.
Available in classic ball, diamond and oval designs.



1/2”
plain T-30
single ball T-31
double ball T-32
s scroll T-36
single diamond T-93
double diamond T-94
single oval T-95
double oval T-96

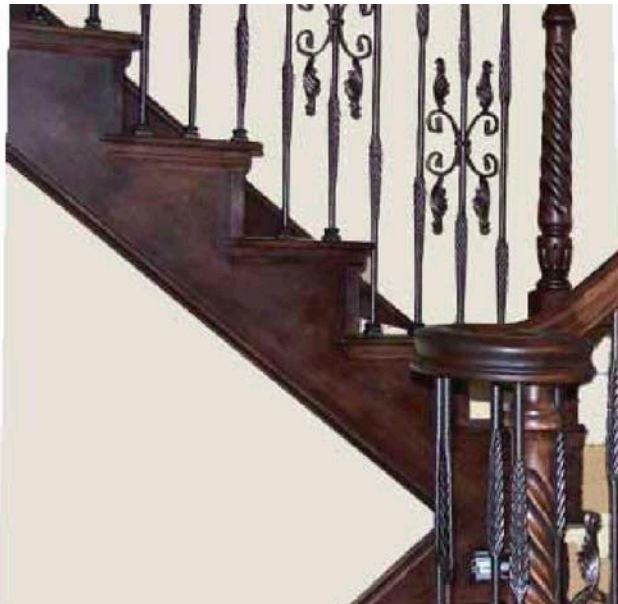


TAOS iron balusters

The arrows motif recalls America’s southwest heritage with hammered edges.



1/2”
flowers/arrow T-21
split arrows T-22
split arrows with basket T-23



These balusters use SH901 and SH905 shoe.



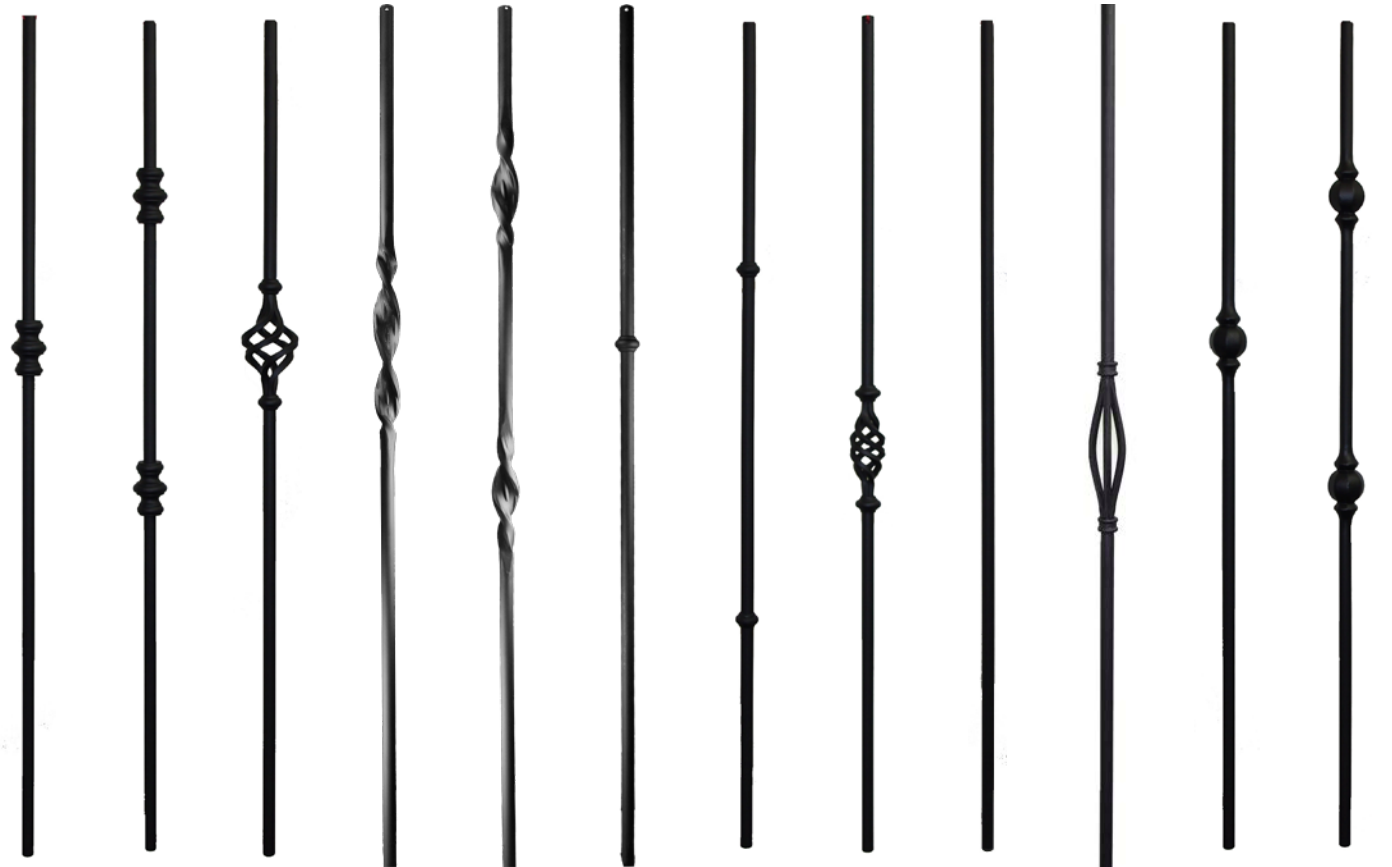
T01, T60 and T61 baulsters, 6910 handrail prefinished in Rue

ROUND iron balusters

Bears the refined, precise look of a metal lathe. Its 5/8” thick-ness makes it bold and beautiful. Choose from four styles to create either a contemporary or traditional look.

PLAIN & KNUCKLE		CONTEMPORARY	
single knuckle	2GR-60	single basket/ribbon	2GR-04
double knuckle	2GR-61	double basket/ribbon	2GR-18
basket	2GR-04		
RIBBON		HAMMERED BALL	
single ribbon	2GR-06	single ball & collar	2GR-22
double ribbon	2GR-07	double ball & collar	2GR-23
COLLAR & BASKET			
single collar	2GR-10		
double collar	2GR-20		
basket	2GR-11		

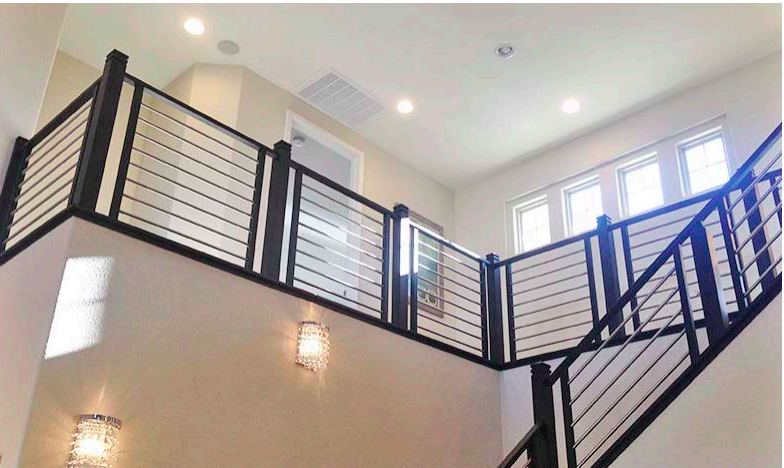
KNUCKLE RIBBON COLLAR & BASKET CONTEMPORARY HAMMERED BALL



2GR-60 2GR-61 2GR-04 2GR-06 2GR-07 2GR-10 2GR-20 2GR-11 2GR-01 2GR-18 2GR-22 2GR-23



TUBE iron balusters



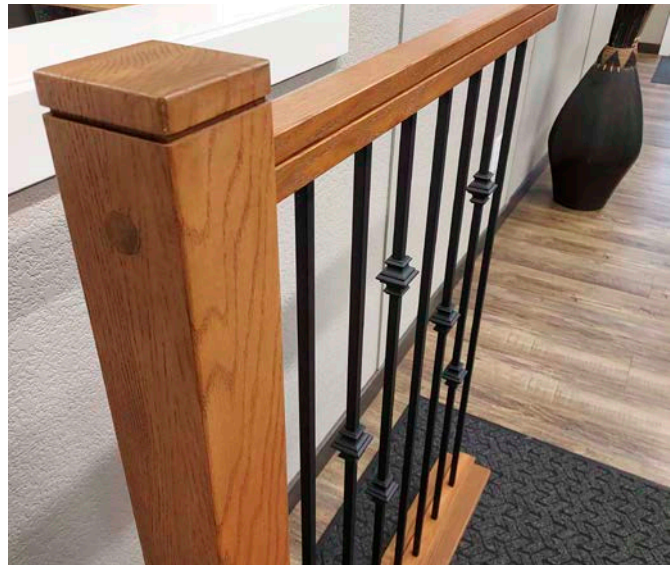
CABLE RAIL





CONTEMPORARY GROOVE STAIR PARTS

newel, 10', 12' & 16' rail, 10', 12' & 16' shoe rail
Available in Oak and Poplar
Great for iron balusters!



IRON ACCESSORIES

square



straight aluminum
SH900 1/2"
SH901 14mm
(black)



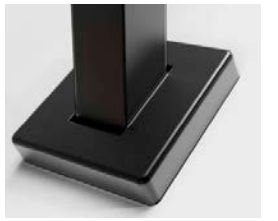
angle aluminum
SH904 1/2"
SH905 14mm
2G904 5/8"
(black)



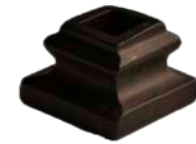
SH906 straight
1/2" aluminum
surface-mount



SH800 straight
1/2" aluminum
without set screw



low profile shoe



SD900 straight
1/2" aluminum
with set screw



SD904 angle
1/2" cast iron



KN500 knuckle
1/2" aluminum

round



SD500R straight
1/2" cast iron



SD504R angle
1/2" cast iron



2GR900 straight
5/8" aluminum



2GR904 angle
5/8" aluminum



C1 collar
5/8" round



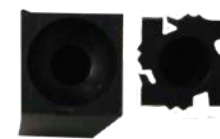
C2 collar
5/8" round



E6100
10.2 oz tube (clear)



2G shot plug



T plug



Baljak anchor



dowel screw plugs

SH - aluminum
SD - cast iron
2G - 5/8" baluster
KN - knuckle
C - collar

BOX NEWELS

A box newel dominates the staircase, draws the eye and brings an architectural aesthetic to your stairway and all its components.



963 **S** O, M

960 **S** 961

991PL 4091 **S** O, M, R, PP fixed pedestal

991RP raised panel

991F fluted

991FP recessed panel

56" pedestal sold separately 959



SOLID construction

Includes flat caps (peak caps are special order)					
ITEM	WIDTH*	LENGTH	TOP	TURN	BOTTOM
960	4-1/2"	48"	6-1/2"	17-1/4"	21"
961	4-1/2"	56"	6-1/2"	25-1/2"	21"
962	3-1/2"	48"	6-1/2"		38-1/4"
963	3-1/2"	56"	6-1/2"		46-1/4"
includes both caps & mounting block					
991PL	6-1/4"	56"	6-1/2"	25-1/4"	21"
991FP	6-1/4"	56"	6-1/2"	25-1/4"	21"
991RP	6-1/4"	56"	6-1/2"	25-1/4"	21"
991F	6-1/4"	56"	6-1/2"	25-1/4"	21"
optional pedestal for 962/963					
959	4-1/2"	22"			

PL - plain
RP - raised panel
FP - flat panel
F - fluted

*measured at base

CRAFTSMAN NEWELS & BALUSTERS

It offers the simple, honest and natural lines of arts and crafts. It's style is timeless; it's look is strong.



100 100EE 200
5060/100 **S** O, M, PP, R
5360/200 **S** O, M, PP, R

4301/300 **S** O, M, R
4000/350 **S** O, R
Oak and Maple newels - chamfered top
Poplar newels - square top

square and eased edge options available

BALUSTER 1-1/4" WIDE		NEWEL 3" WIDE	
ITEM	LENGTH	ITEM	LENGTH
100/5060	31"	300-48/4301	48"
100/5060	36"	300-54/4301	54"
100/5060	41"	300-59/4301	59"
100EE	31"	300EE	43"
100EE	36"	300EE	48"
100EE	41"	300EE	54"
		3005BT	54"
1-3/4" WIDE		3-1/2" WIDE	
200/5360	36"	350-48/4000	48"
200/5360	41"	350-56/4000	56"
		4005AT	56"
		4005BT	56"
		4-1/2" WIDE	
		450-48	48"
		450-59	59"



grooved newels available



"A" style newel caps

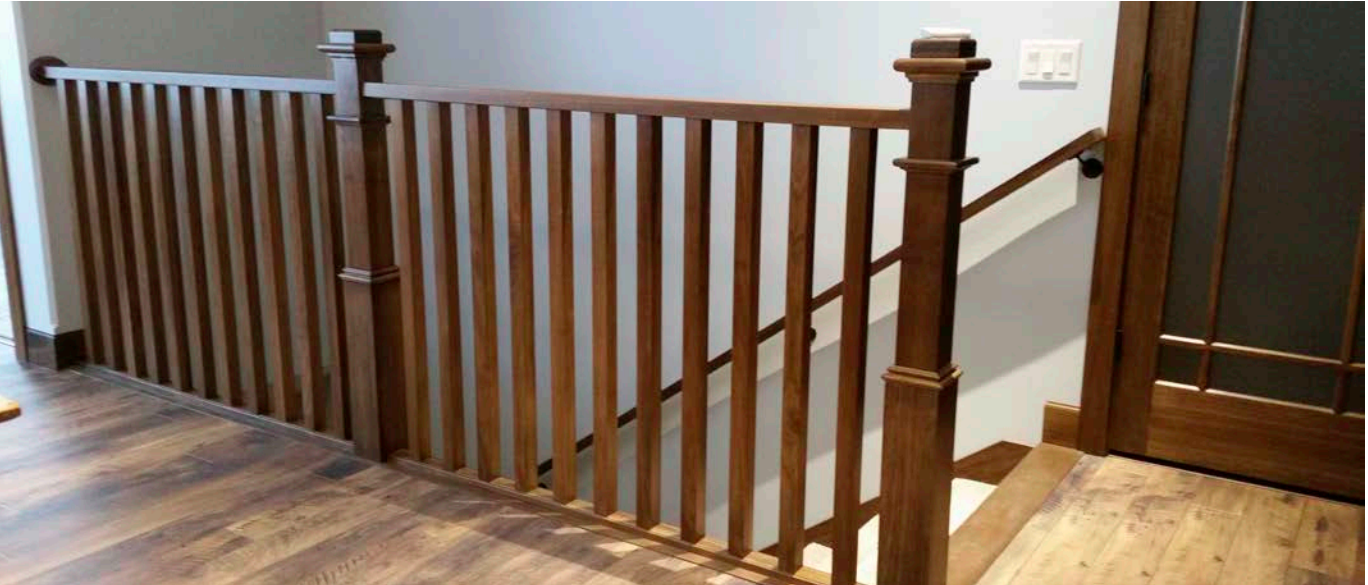
"B" style newel caps

"C" style newel caps

"D" style newel caps

900 style newel caps

build your own box newel



call for stocking lengths
Oak = O, Hard Maple = M, Pine = P, Poplar = R, Hickory = H, Knotty Alder = KA, Cherry = C, Knotty Pine = KP, Primed Polar = PP

HAMPTON

A classic turning with a bit more detail, perfect for a traditional home. Solid, yet refined, it gives your staircase class. Post-to-post newels are ball top (BT); over-the-post, pin top (PT). Ball finial is 3-1/2" high.



COLONIAL

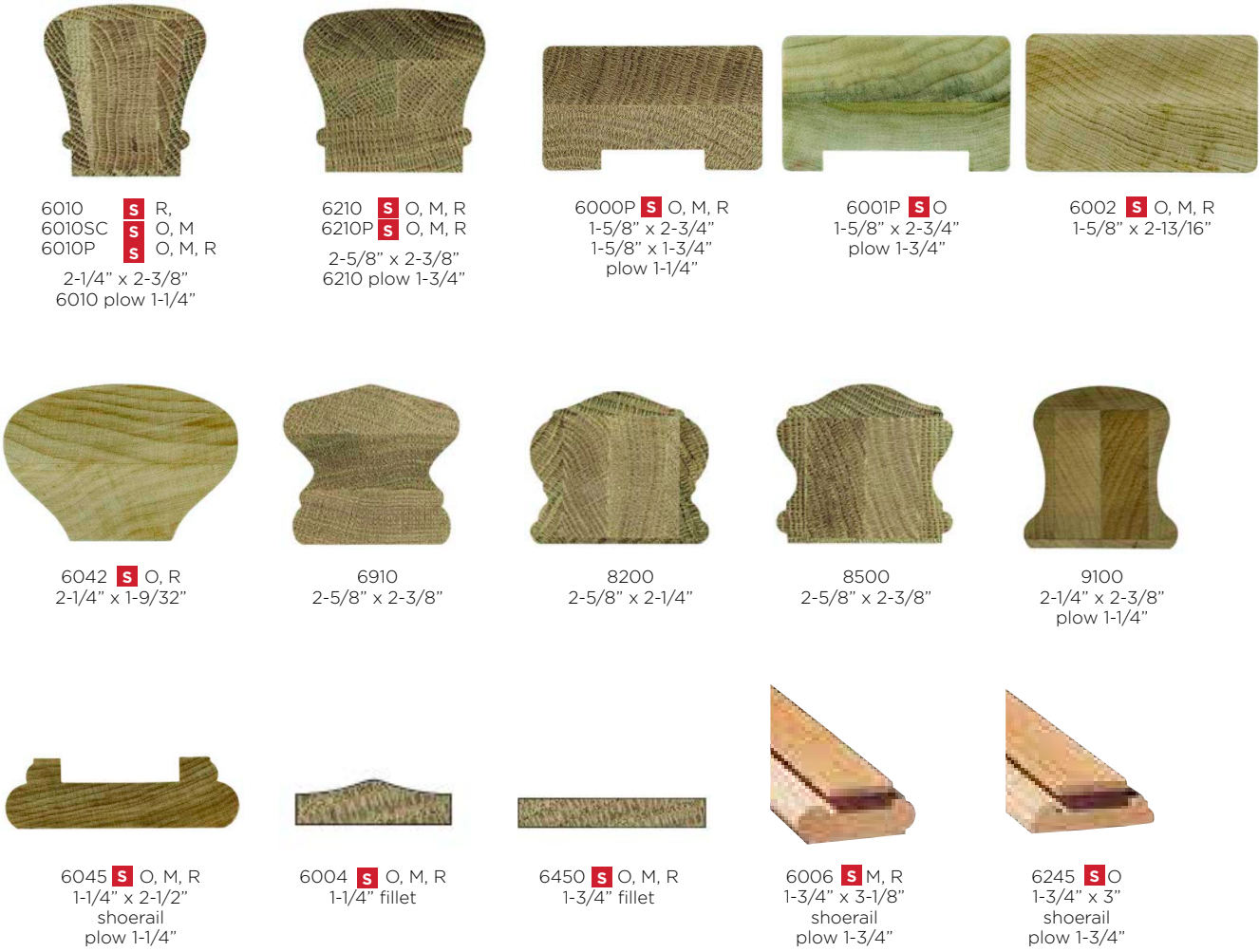
Colonial is American. Its always in style, and its 1-1/4" width is refined. Post-to-post newels are ball or mushroom top. Newels are available for kneewalls.



call for stocking lengths
Oak = O, Hard Maple = M, Pine = P, Poplar = R, Hickory = H, Knotty Alder = KA, Knotty Pine = KP, Primed Polar = PP

HANDRAIL & BRACKETS

plowed handrails are also available



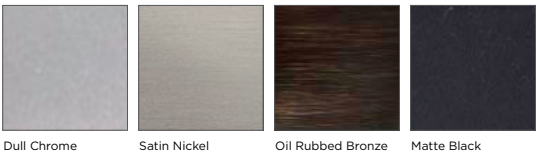
3002HD **S**



3003 **S**
3003LA, 3004

handrail & prefix

6210	72
6910	69
8200	82
8500	85
9100	91
6042	n/a



model	material	reach	available finish
3002 HD	zinc alloy	2-3/8"	antique brass, bright brass, bright chrome, dull chrome, oil rubbed bronze, satin black, satin nickel, white, rubbed copper
3003	zinc alloy	2-3/4"	antique Brass, bright brass, bright chrome, dull chrome, oil rubbed bronze, satin black, satin nickel, white, rubbed copper
3003LA 3004	zinc alloy solid brass	3-1/8" 2-5/8"	dull chrome, oil rubbed bronze, satin black, satin nickel bright brass, dull chrome, oil rubbed bronze, satin nickel

ROSETTES



7037 S O, M, R
4" x 5-1/2" oval rosette



7033 S O, M, R
4-1/4" x 6" rectangle



7026 S O
4-3/4" x 4-3/4"



7017
4-1/2" x 4-1/2"

FALSE TREAD



8110-2
false starting step



8171 LH or RH S R, M, O
tread cap with return
nosing & cove



8172 S R, M, O
tread cap



8176 S R, M, O
riser cap

TREADS & RISERS



8070 tread: solid & core
48" S O, M



8070MTR LH or RH
mitered return one side



8078 riser: solid & core
S O, M, P, PP



8080 13" left/right
nosing



8070DMR 48"
double mitered returned treads:
overall width of tread does not
include mitered returns

STAIR LINEALS



S4S
boards



8120 1/2" x 13/16"
shoe



8177
nose/cove

STARTING STEPS



8110
starting step, bullnose one end

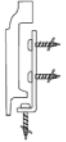


8112
starting step, bullnose both ends


- **handrail prefixes:** add handrail prefix when ordering fittings
- **volutes:** ascending arm volutes also available in low, medium and high
- **gooseneck fittings:** includes one #12, 60° Up Easing, along with connection hardware and plugs, if 1-riser is needed, cut vertical gooseneck to proper length
- **starting steps:** other configurations starting steps available on special order

over-the-post handrail systems must be fit,
installed and prepped prior to prefinish

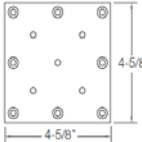
FASTENERS



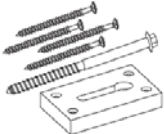
3009 (3") / 3019 (3-1/2")
newel attaching kit




3070 (1/2" x 10-3/4") S
big bolt newel fastener




FU6282 EZLock surface lock
plate newel fastener S



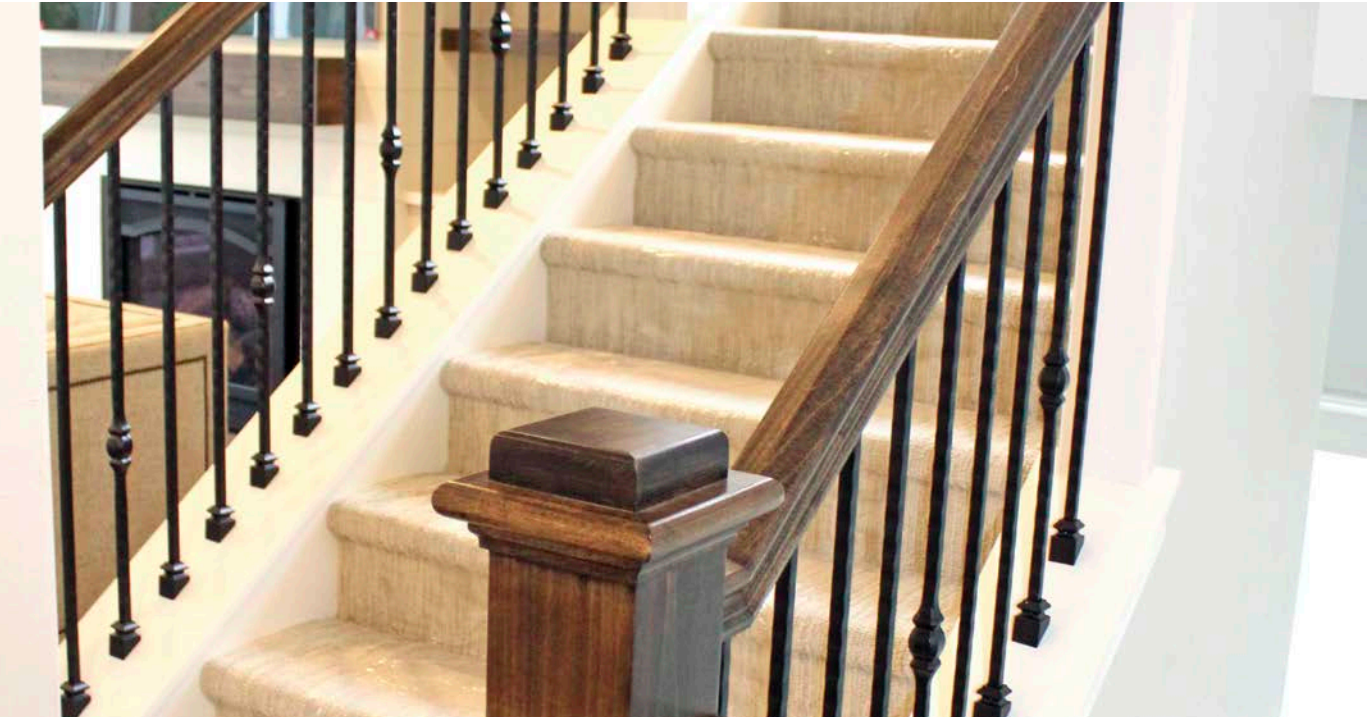
FU6283 S
keylock newel fastener



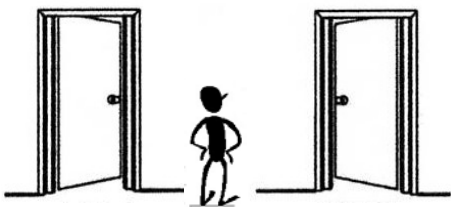
3001 rail bolts S
rail bolt kit



FU6287 S
mini lock rail fastener (2 pack)



DOOR HANDING



In the above diagram, you are standing on the Stop Side of Door



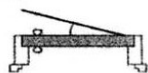
In the above diagram, you are standing on the Hinge Pin Side of Door

TO DETERMINE DOOR HANDING

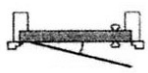
Review the diagrams above and circle the option below that matches your specifications.



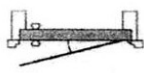
LH



RH



RH



LH



Double Door with Left Active, Right Fixed



Double Door with Left Fixed, Right Active



Double Door with Both Active



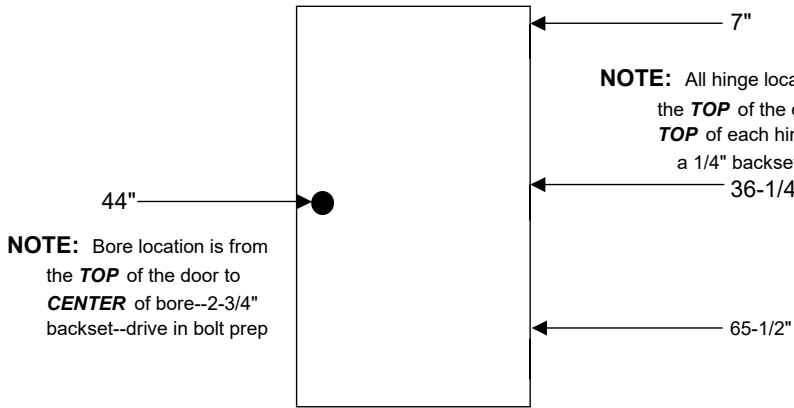
Double Door with Left Fixed, Right Active



Double Door with Left Active, Right Fixed



Double Door with Both Active



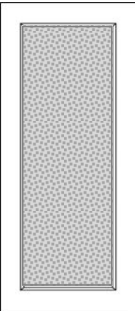
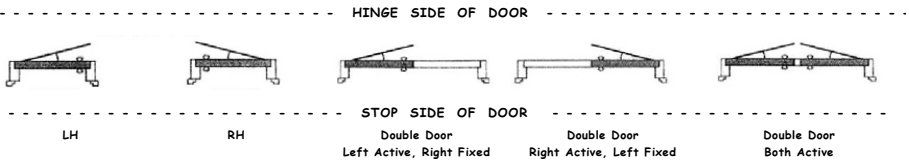
NOTE: All hinge locations are from the TOP of the door to TOP of each hinge with a 1/4" backset

NOTE: Bore location is from the TOP of the door to CENTER of bore--2-3/4" backset--drive in bolt prep

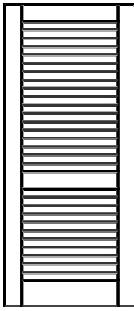
custom hinge placement is available • deadbolt bore available upon request • 2-3/8" backset available upon request mortise edge prep (square & radius corner) available upon request

please allow 1/16" variance in placement locations on non-custom doors

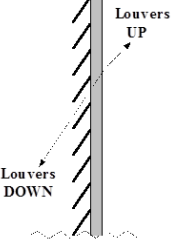
Swing Options



Raised/Textured Glass Doors:
Must specify which side the raised/textured glass is on, stop side or hinge side

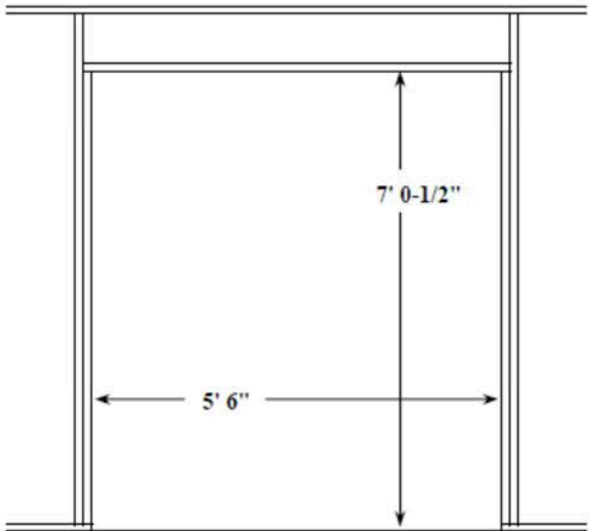


Louvered Doors:
Must specify which side the louvers face down, stop side or hinge side.



Glass Pantry Doors:
Must specify which side "Pantry" is read, stop side or hinge side.

STANDARD POCKET DOOR SPECIFICATIONS



STANDARD R.O. FOR 2-8 POCKET DOOR FRAME
Standard R.O. Width = Door Width X 2 + 2"
Standard R.O. Height = Door Height + 4-1/2"

FOR DOUBLE POCKET DOOR
R.O. Width = Door Width X 4 + 1-1/2"

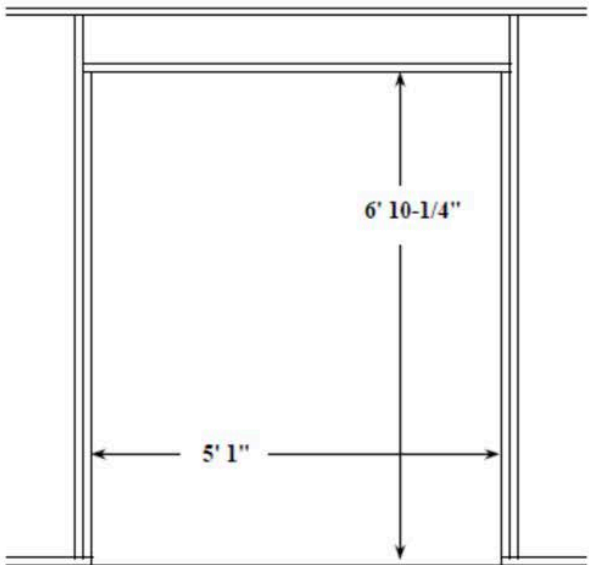
STANDARD POCKET DOOR R.O.
for 1-3/8" thick doors without raised molding

3-0 Pocket	=	6' 2" X 7' 0-1/2"
2-8 Pocket	=	5' 6" X 7' 0-1/2"
2-6 Pocket	=	5' 2" X 7' 0-1/2"
2-4 Pocket	=	4' 10" X 7' 0-1/2"
2-0 Pocket	=	4' 2" X 7' 0-1/2"

CUSTOM SIZE POCKET FRAME

Any 1-3/8" doors with raised moulding OR any door thicker than 1-3/8" will require a custom size pocket frame. Please Note: This will require wall to be thicker than standard 2 x 4 to accept custom size frame.
>>>> Call for Pricing <<<<

STANDARD BIPASS DOOR SPECIFICATIONS



STANDARD R.O. FOR 5-0 BIPASS
Standard R.O. Width = Door Width + 1"
Standard R.O. Height = Door Height + 2-1/4"

**Based off SPO or Badger cut down door height - for 80" door adjust accordingly

** STANDARD BIPASS OPENINGS

	Rough Opening	Finished Opening
6-0 Bypass:	6' 1" X 6' 10-1/4"	5' 11" X 6' 9"
5-4 Bypass:	5' 5" X 6' 10-1/4"	5' 3" X 6' 9"
5-0 Bypass:	5' 1" X 6' 10-1/4"	4' 11" X 6' 9"
4-8 Bypass:	4' 9" X 6' 10-1/4"	4' 7" X 6' 9"
4-0 Bypass:	4' 1" X 6' 10-1/4"	3' 11" X 6' 9"

STANDARD BIPASS TRACK LENGTH

6-0 Bypass (2 - 3/0)	71"
5-4 Bypass (2 - 2/8)	63"
5-0 Bypass (2 - 2/6)	59"
4-8 Bypass (2 - 2/4)	54"
4-0 Bypass (2 - 2/0)	47"

BIPASS DOOR HEIGHT

Door Height for 1166 Track = 79-1/4"

Door Height for 138F & 134F Track = 78-5/8"

(With track mounted to head jamb w/81" jamb sides.)

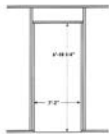
*Badger will cut down, upon request, but this will void Manufacturer's Warranty.

IDLDR CUT: See Labor Options (Sec. T)

STANDARD PREHUNG SPECIFICATIONS

Standard Unit Height (Inc. Jamb) = 81-3/4"

SINGLE DOOR SIZES



STANDARD DOOR ROUGH OPENINGS
FOR HOLLOW CORE, SOLID CORE &
PRIMED HARDBOARD DOORS

Standard R.O. Width = Door Width + 2"
Standard R.O. Height = Door Height + 2-1/4"
3-0 Door = 3' 2" x 6' 10-1/4"
2-8 Door = 2' 10" x 6' 10-1/4"
2-6 Door = 2' 8" x 6' 10-1/4"
2-4 Door = 2' 6" x 6' 10-1/4"
2-0 Door = 2' 2" x 6' 10-1/4"

FOR UNIT SIZE ADD:

WIDTH = Door Size plus 1-3/4" (+/-)

HEIGHT = Door Size plus 1-3/4"

FULL & SQUARE DOOR ROUGH OPENINGS
FOR PANELED OR GLASS DOORS

Standard R.O. Width = Door Width + 2-1/4"
Standard R.O. Height = Door Height + 2-1/4"

1-6 Door = 1' 8-1/4" x 6' 10-1/4"
3-0 Door = 3' 2-1/4" x 6' 10-1/4"
2-8 Door = 2' 10-1/4" x 6' 10-1/4"
2-6 Door = 2' 8-1/4" x 6' 10-1/4"
2-4 Door = 2' 6-1/4" x 6' 10-1/4"
2-0 Door = 2' 2-1/4" x 6' 10-1/4"
1-6 Door = 1' 8-1/4" x 6' 10-1/4"

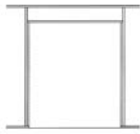
FOR UNIT SIZE ADD:

WIDTH = Door Size plus 1-3/4" (+/-)

HEIGHT = Door Size plus 1-3/4"

*Note: The unit width may vary due to door slab width variances from manufacturer.

DOUBLE DOOR SIZES



STANDARD DOUBLE DOOR ROUGH OPENINGS
FOR HOLLOW CORE, SOLID CORE &
PRIMED HARDBOARD DOORS

Standard R.O. Width = Door Width + 2"
Add 5/8" to R.O. Width for Door with Astragal
Standard R.O. Height = Door Height + 2-1/4"

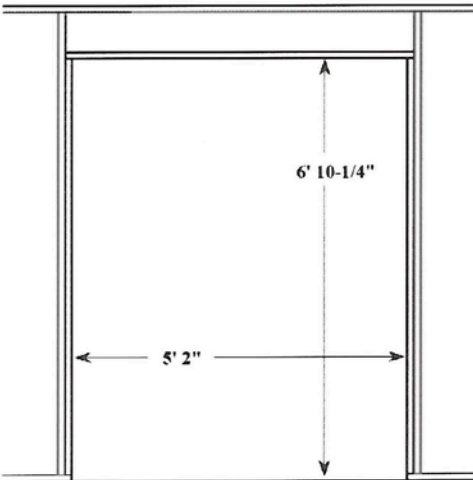
Unit Size	w/Astragal	w/o Astragal
2 - 3/0 (6/0)	74-5/8"	74"
2 - 2/8 (5/4)	66-5/8"	66"
2 - 2/6 (5/0)	62-5/8"	62"
2 - 2/4 (4/8)	58-5/8"	58"
2 - 2/0 (4/0)	50-5/8"	50"

FULL & SQUARE
DOUBLE DOOR ROUGH OPENINGS
FOR PANELED OR GLASS DOORS

Standard R.O. Width = Door Width + 2-1/4"
Add 5/8" to R.O. Width for Door with Astragal
Standard R.O. Height = Door Height + 2-1/4"

Unit Size	w/Astragal	w/o Astragal
2 - 3/0 (6/0)	74-7/8"	74-1/4"
2 - 2/8 (5/4)	66-7/8"	66-1/4"
2 - 2/6 (5/0)	62-7/8"	62-1/4"
2 - 2/4 (4/8)	58-7/8"	58-1/4"
2 - 2/0 (4/0)	50-7/8"	50-1/4"

STANDARD BIFOLD DOOR SPECIFICATIONS



STANDARD BIFOLD OPENINGS

	Rough Opening	Finished Opening
6-0 Bifold:	6' 2" X 6' 10-1/4"	6' 0" X 6' 9"
5-0 Bifold:	5' 2" X 6' 10-1/4"	5' 0" X 6' 9"
4-0 Bifold:	4' 2" X 6' 10-1/4"	4' 0" X 6' 9"
3-0 Bifold:	3' 2" X 6' 10-1/4"	3' 0" X 6' 9"
2-6 Bifold:	2' 8" X 6' 10-1/4"	2' 6" X 6' 9"
2-0 Bifold:	2' 2" X 6' 10-1/4"	2' 0" X 6' 9"

STANDARD BIFOLD DOOR SIZES

6-0 Bifold	71"
5-0 Bifold	59"
4-0 Bifold	47"
3-0 Bifold	35-1/2"
2-6 Bifold	29-1/2"
2-0 Bifold	23-1/2"

STANDARD R.O. FOR 5-0 BIFOLD

Standard R.O. Width = Door Width + 2"

Standard R.O. Height = Door Height** + 3-1/4"

STANDARD BIFOLD DOOR HEIGHT

H/C & Wood Panel using 1800 or 1700 Hdw = 79"

S/C Flush & S/C Hardboard 111FD = 78-1/4"

BIFOLD DOOR HARDWARE

Bifolds with 1800 or 1700 hardware are undercut 1" (ie: 6'8" = 6'7")

Bifolds with 111FD hardware are undercut 1-3/4" (6'8" = 6'6-1/4")

1800 Series, Johnson	use with	Hollow Core Bifolds
1700 Series, Johnson	use with	Wood Panel Bifolds
111FD Series, Johnson	use with	S/C Flush and S/C Hardboard

>>> REPLACEMENT DOOR ORDER FORM <<<

Please fill in door information in each numbered section below. Send signed & dated copy to Badger's millwork office.

Dealer Name: _____

Date: _____

City / State: _____

Phone #: _____

Dealer Contact: _____

Fax #: _____

Signature: _____

Original SO# _____ PO# _____ Job/Location: _____

1. Door Specs

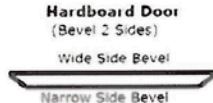
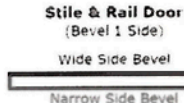
Order Qty: _____

Species: _____

Size (WxH): _____

Thickness: _____

Wide Side Bevel Size: _____



2. Door Style

Flush: HC____ SC____

Flat Panel: # of Panels____ Panel Style: Shaker or Sticking

Raised Panel: # of Panels____ Panel Style____

Dbl Hip Panel: # of Panels____ Panel Style____

Molded Panel: Smooth____ Textured____

of Panels____ Panel Style____

3. Finish: Raw____ Standard Color:____ Custom Color PF#____

4. Handling:

Circle
option



LH

RH

STOP SIDE OF DOOR

Double Door
Left Active, Right Fixed

Double Door
Right Active, Left Fixed

Double Door
Both Active

5. Machining Specs

Hinge Size: 3-1/2"____ 4"____ 4-1/2"____

Hinge Radius: 1/4"____ 5/8"____ Square____

Face Bore: 2-1/8" (Std)____ No Bore____

Backset: 2-3/4" (Std)____ 2-3/8"____

Edge Bore: Drive-In (Std)____ Mortise____

Door Edge Prep: No____ Yes____ Size____ Sq____ RC____

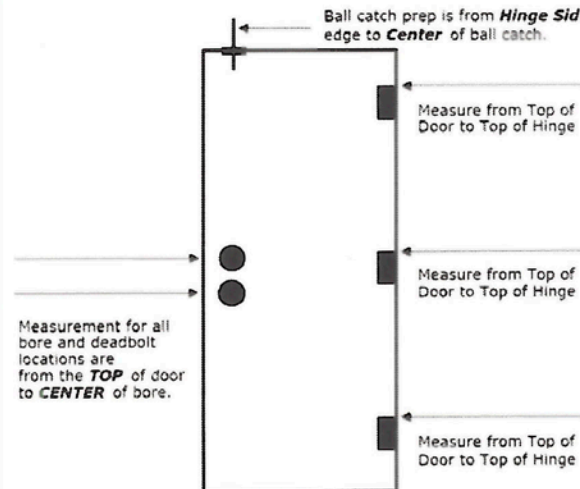
Lockset Brand: _____

Deadbolt Bore: 2-1/8" (Std)____ Other____

Peep Site: 190 Deg____ 160 Deg____

Ball Catch Prep: _____


Fire Label Rating: _____







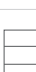
>> Always measure from the top of door NOT the jamb. <<

Replacement Door Order Form (Rev. 05.05.2009)

DESIGN & SIZE OPTIONS

LIVINGSTON..			PASSAGE												BIFOLDS										
LIVINGSTON.. (3 PANELS)			12"	14"	15"	16"	18"	20"	24"	26"	28"	30"	32"	34"	36"	18"	24"	28"	30"	32"	36"	48"	60"	72"	
	Commercial 10" Bottom Rail	Smooth 80"	•	•	•	•	•	•	•	•	•	•	•	•	•		•		•		•	•	•	•	
		Smooth 84"	•	•	•	•	•	•	•	•	•	•	•	•	•	•		•		•		•	•	•	•
		Smooth 96"	•	•	•	•	•	•	•	•	•	•	•	•	•	•		•		•		•	•	•	•

HERITAGE SERIES.			PASSAGE												BIFOLDS									
LINCOLN PARK. (1 PANEL)			12"	14"	15"	16"	18"	20"	24"	26"	28"	30"	32"	34"	36"	18"	24"	28"	30"	32"	36"	48"	60"	72"
	Commercial 10" Bottom Rail	Smooth 80"	•	•	•	•	•	•	•	•	•	•	•	•	•		•		•		•	•	•	•
		Smooth 84"	•	•	•	•	•	•	•	•	•	•	•	•	•	•		•		•		•	•	•
		Smooth 96"	•	•	•	•	•	•	•	•	•	•	•	•	•	•		•		•		•	•	•
LOGAN. (2 PANELS)																								
	Commercial 10" Bottom Rail	Smooth 80"	•	•	•	•	•	•	•	•	•	•	•	•	•		•		•		•	•	•	•
		Smooth 84"	•	•	•	•	•	•	•	•	•	•	•	•	•	•		•		•		•	•	•
		Smooth 96"	•	•	•	•	•	•	•	•	•	•	•	•	•	•		•		•		•	•	•
WINSLOW. (3 PANELS)																								
	Commercial 10" Bottom Rail	Smooth 80"	•	•	•	•	•	•	•	•	•	•	•	•	•		•		•		•	•	•	•
		Smooth 84"	•	•	•	•	•	•	•	•	•	•	•	•	•	•		•		•		•	•	•








WEST END COLLECTION.		PASSAGE														BIFOLDS									
		12"	14"	15"	16"	18"	20"	24"	26"	28"	30"	32"	34"	36"	18"	24"	28"	30"	32"	36"	48"	60"	72"		
	BERKLEY.**																								
	Smooth 80"	•*	•*	•*	•*	•*	•*	•	•	•	•	•	•	•		•		•		•					
	Smooth 84"	•*	•*	•*	•*	•*	•*	•	•	•	•	•	•	•		•		•		•					
	MELROSE.**																								
	Smooth 80"	•*	•*	•*	•*	•*	•*	•	•	•	•	•	•	•	•	•		•		•					
	Smooth 84"	•*	•*	•*	•*	•*	•*	•	•	•	•	•	•	•	•	•		•		•					


*Thinner outer style will not affect functionality.

**Not for use with double doors.

Note: 48", 60" and 72" bifolds are achieved by doubled 24", 30" and 36" bifolds.

Molded Panel Doors Notes: Please note that some sizes are only available as a result of being trimmed from a larger facing. The trimming process may result in a stile width that is too narrow to accommodate a standard bore. To machine a standard bore with a 2-3/8" backset on the lock hole and a 2-1/8" diameter bore, the outer stile measurements must be no less than 3-7/16" wide. Many facings have a lockrail that will accommodate a standard bore even when the stile width is too narrow. Please refer to Masonite Molded Door Facing Dimensional Specifications to verify the outer stile measurements or contact your Masonite Interior Door servicing plant. Textured refers to embossed wood-grain. Pre-finished white is available as textured only. Not all molded panel designs and sizes are available in all regions as stock products. Please check for special order availability.

MOLDED PANEL DOORS			PASSAGE														BIFOLDS									
2 PANEL ROMAN SMOOTH			12"	14"	15"	16"	18"	20"	24"	26"	28"	30"	32"	34"	36"	42"	16"	18"	24"	28"	30"	32"	36"	48"	60"	72"
	Smooth 80"		•	•	•	•	•	•	•	•	•	•	•	•	•			•	•	•	•	•	•	•	•	
	Smooth 84"		•	•	•	•	•	•	•	•	•	•	•	•	•	•			•	•	•	•	•	•	•	
	Smooth 96"						•	•	•	•	•	•	•	•	•	•					•	•	•		•	•
CHEYENNE																										
	Smooth 80"		•	•	•	•	•	•	•	•	•	•	•	•	•				•	•	•	•	•	•	•	
	Smooth 96"		•	•	•	•	•	•	•	•	•	•	•	•	•	•				•	•	•	•	•	•	
2 PANEL																										
	Smooth 80"		•	•	•	•	•	•	•	•	•	•	•	•	•			•	•	•	•	•	•	•	•	
	Smooth 84"		•	•	•	•	•	•	•	•	•	•	•	•	•			•	•	•	•	•	•	•	•	
	Smooth 96"		•	•	•	•	•	•	•	•	•	•	•	•	•			•	•	•	•	•	•	•	•	
4 PANEL																										
	Smooth 80"		•	•	•	•	•	•	•	•	•	•	•	•	•			•	•	•	•	•	•	•	•	
	Smooth 84"		•	•	•	•	•	•	•	•	•	•	•	•	•			•	•	•	•	•	•	•	•	
	Smooth 96"		•	•	•	•	•	•	•	•	•	•	•	•	•			•	•	•	•	•	•	•	•	
RIVERSIDE																										
	Smooth 80"		•	•	•	•	•	•	•	•	•	•	•	•	•			•	•	•	•	•	•	•	•	
	Smooth 84"		•	•	•	•	•	•	•	•	•	•	•	•	•			•	•	•	•	•	•	•	•	
	6 Panels Smooth 96"		•	•	•	•	•	•	•	•	•	•	•	•	•			•	•	•	•	•	•	•	•	
6 PANEL																										
	Smooth 80"		•	•	•	•	•	•	•	•	•	•	•	•	•			•	•	•	•	•	•	•	•	
	Textured 80"		•	•	•	•	•	•	•	•	•	•	•	•	•		•	•	•	•	•	•	•	•	•	
	Smooth 84"		•	•	•	•	•	•	•	•	•	•	•	•	•			•	•	•	•	•	•	•	•	
	Textured 84"									•	•	•	•	•	•			•	•	•	•	•	•	•	•	
	Smooth 96"		•	•	•	•	•	•	•	•	•	•	•	•	•			•	•	•	•	•	•	•	•	
	Textured 96"								•	•	•	•	•	•			•	•	•	•	•	•	•	•	•	
2 PANEL COMMERCIAL																										
	Commercial 10" Bottom Rail	Smooth 80"													•	•	•	•								
		Smooth 84"													•	•	•	•								

FLUSH SERIES		PASSAGE												BIFOLDS									
	80", 84", 96" Heights	12"	14"	15"	16"	18"	20"	24"	26"	28"	30"	32"	34"	36"	18"	24"	28"	30"	32"	36"	48"	60"	72"
	MDF																						
	Primed	•	•	•	•	•	•	•	•	•	•	•	•	•	•	•	•	•	•	•	•	•	
	VENEER																						
	Oak, Birch, Hardwood	•	•	•	•	•	•	•	•	•	•	•	•	•	•	•	•	•	•	•	•	•	



ENTRY DOORS

See the Badger Entry Doors catalog for a full line of available doors and custom options



Oak textured fiberglass
22x64 lite



smooth fiberglass with 22x17
lite 2-panel & dentil shelf



Mahogany textured fiberglass
22x64 lite



Oak textured 4-lite equal with
Pear glass



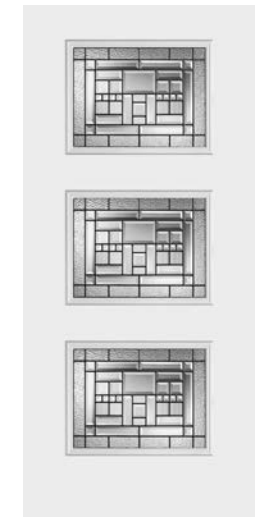
Fir textured fiberglass 22x17 lite
2-panel with dentil shelf
Fir textured fiberglass sidelite 8x17 glass 1-panel



steel 22x36 lite with 1-panel plank



Fir textured fiberglass 4 lite
flush glazed 3/4 lite



steel 22x17 lite with 3-panel



design your dream interior

badgerlax.com • 608.788.0100