



**KITCHEN & BATH  
COLLECTION**



**KITCHEN • BATH • LOCKERS • OFFICE • CABINETS • COUNTERTOPS • VANITIES • FLOORING**





BADGER DESIGN TEAM

# YOUR VISION, OUR EXPERTISE

## EXPLORE OPTIONS

Get the storage, durability and functionality you need, combined with beauty and your personalized style. Badger offers a wide selection of cabinet, countertop and flooring products to create the kitchen, bath or space of your dreams. Find your style - choose from modern, arts and crafts, transitional or traditional collection. Complete the look with the perfect color and details. Take advantage of specialized custom products. The options are endless.

## DESIGN PROCESS

Badger's experienced design team specializes in helping you select the right products and designing the kitchen or space of your dreams within your budget. Creative and innovative, as well as responsive and reliable, our team will work with you every step of the way, providing personalized service and attention to detail. Starting with initial concept meetings, viewing samples and discussing options, then a customized 20/20 layout design will provide realistic drawings to bring your vision to life as quality products and designs come together ready for installation.

Together with 80+ years of design experience, your dedicated designer is always available to answer any questions and guide you through the process.

MADE IN AMERICA

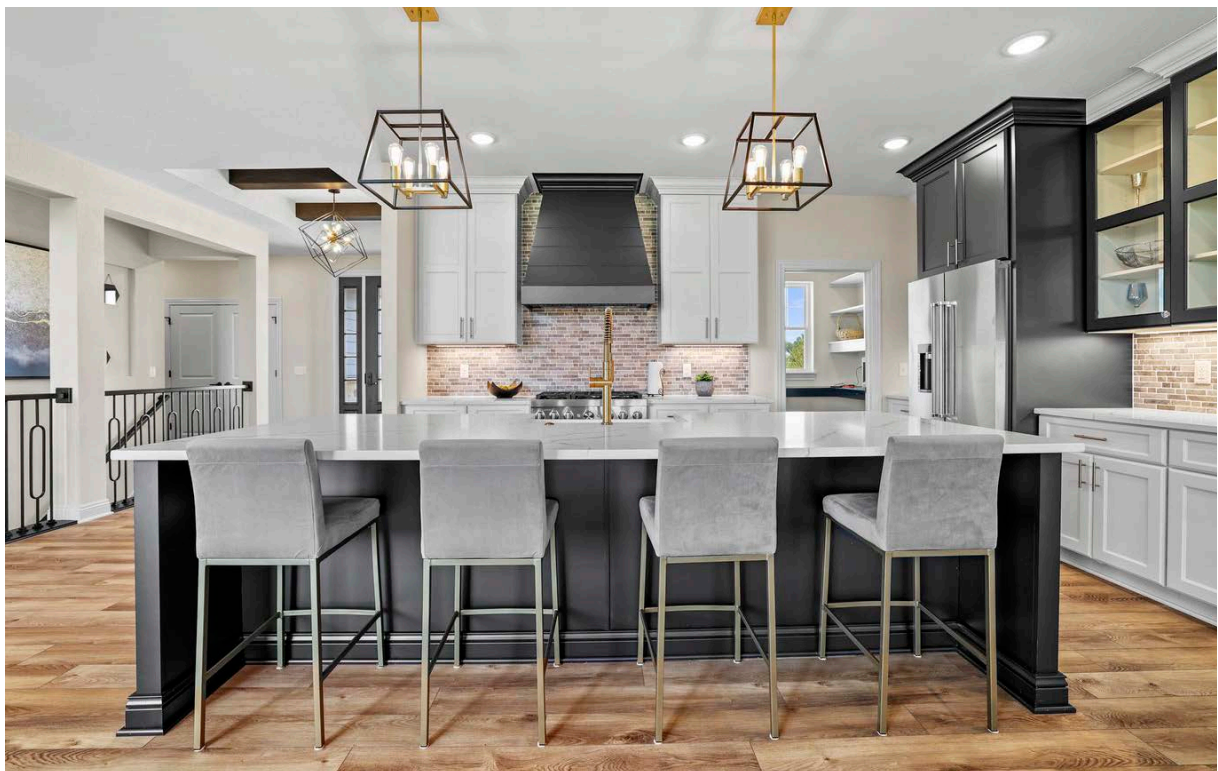
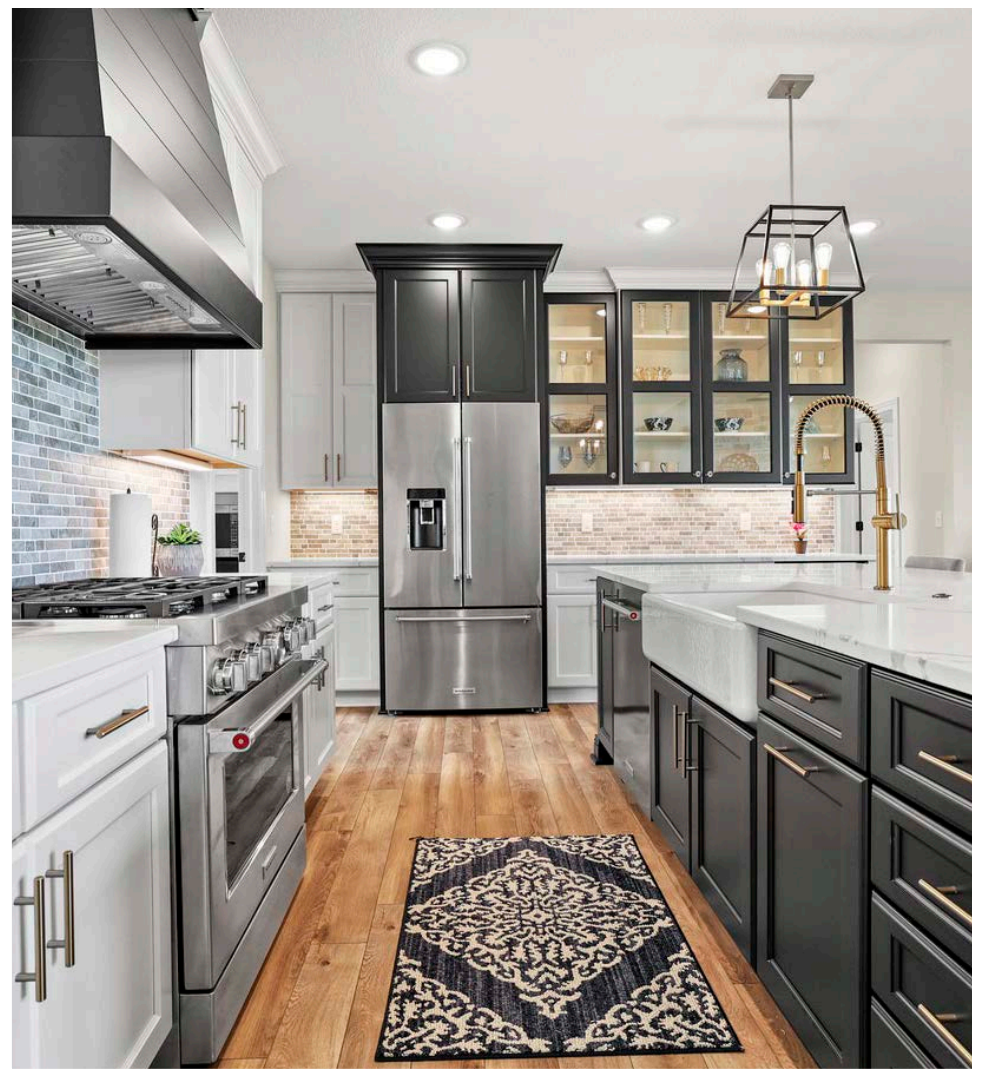
# KITCHEN CABINETS & COUNTERTOPS



## COUNTRYSIDE CABINETS

Custom made simple. Countryside Cabinets are the preferred choice and trusted partner for semi-custom cabinets. Crafted with pride, made to order, and built to last.

Value focused and quality driven since 1975. Design your perfect kitchen and choose from endless options: wood door styles, wood species, endless finishes, overlay and storage options. Warranted against defects of material or workmanship for 10 years.





“

Working with the Badger's cabinet department never disappoints. The staff is very knowledgeable and can answer any question you may have, whether it's regarding the Countryside line or just about cabinetry design in general. They always respond promptly to phone calls and emails and they take care of you all the way up until your job is complete.

*Danielle L.*





## BADGER BUILDER SERIES



ARCTIC



SADDLE



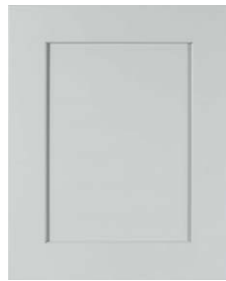
Choose from six maple door finishes in a slab door style or shaker style modified full or standard overlay. Featuring 2-1/4" stiles and rails and gently eased outside edge profile. Ideal for single kitchens and multi-family applications.



COFFEE



ESPRESSO



DUSK



PEBBLE







*Live*  
every moment  
*Laugh*  
every day  
*Love*  
beyond words





## CRESTWOOD

For over 50 years Crestwood has been a leader in the kitchen and bath industry. Offering different lines for your cabinet needs - Simplicity, Core, Essentials and Contempo.

Simplicity is a Custom Cabinet Line offering a collection of Contemporary, Transitional and Traditional door style options.

Core is a Semi-Custom Cabinet Line.

Essentials is a Value-Driven Line.

Contempo is a curated collection with high gloss, textured and matte material selections, Contempo is the most complete contemporary line of cabinetry in the market.









**MSI**  
Making Dream Surfaces Attainable

**HanStone  
Quartz**

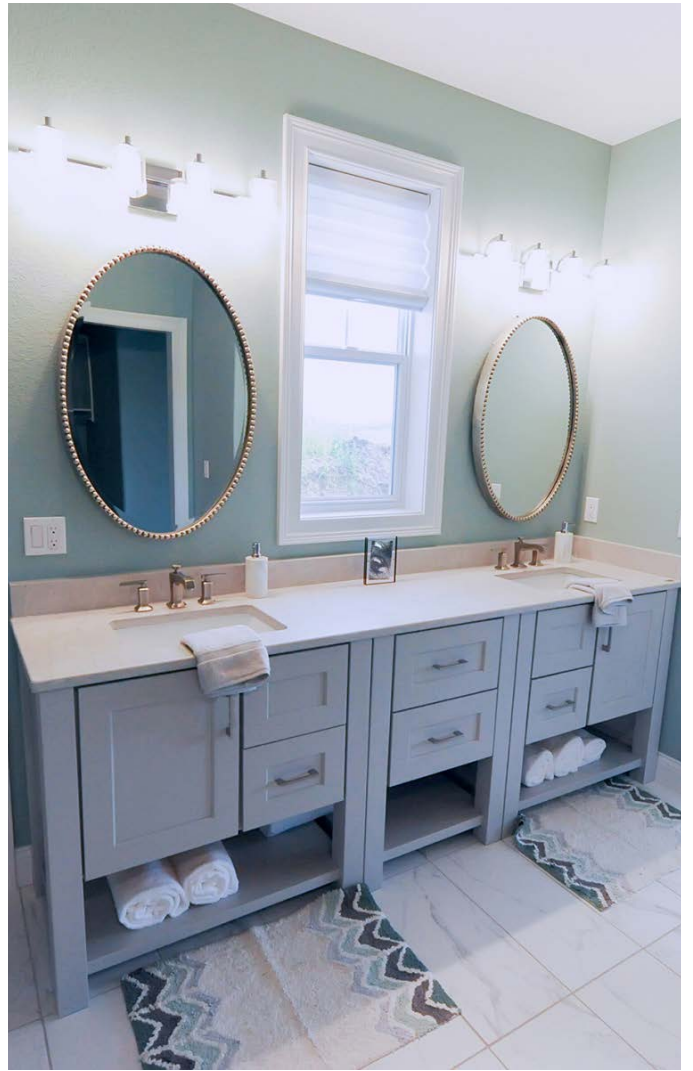
**silestone**  
Designed by COSENTINO

**DEKTON**

# BATHROOM CABINETS & VANITIES



Each of these product lines offer many different style and color options. These product lines also offer a choice of length and depth of tops, multiple and two-tone bowl, styles, placement and a custom edges.

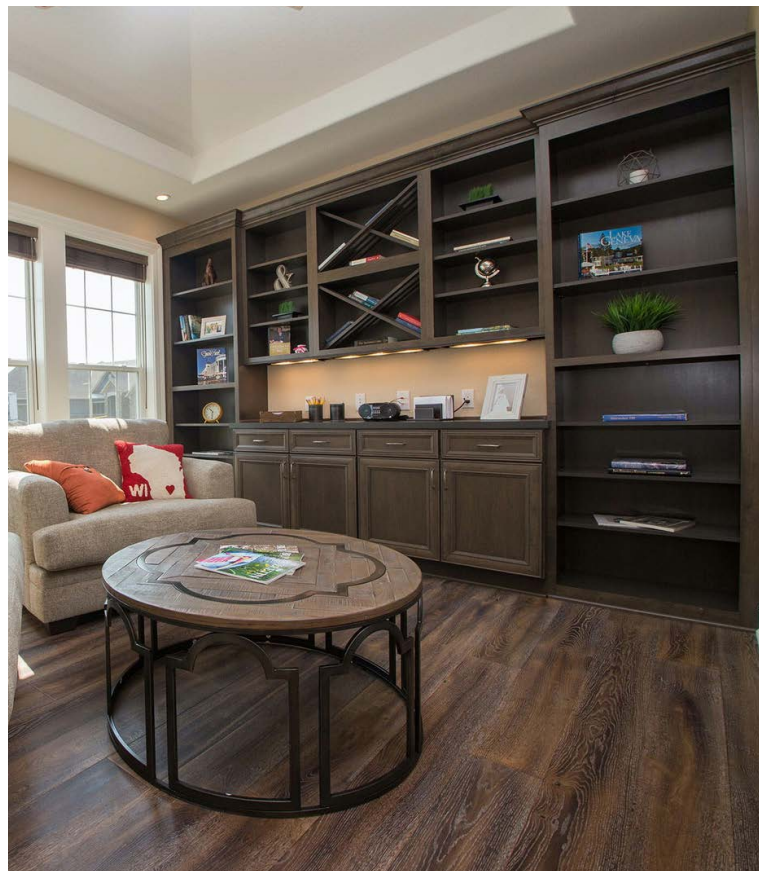


# CABINETS



## COMPLETE EACH ROOM

Add style & storage to an office, living room, laundry room or entry.







# FLOORING



**TRENDS**  
in RIGID

SPC/Rigid provides unprecedented strength, dimensional stability, and damage resistance. Its unique homogeneous construction, which combines the highest polymer content with today's most popular visuals, creates an outstanding solution for both commercial and residential installations. Melted under heat and intense pressure into solid planks, SPC/Rigid has a density much greater than that of traditional composites, resulting in superior surface peel resistance, greater dimensional stability, and 100% waterproofing.

## REGAL XL

- 15 Year Commercial, Lifetime Residential, Lifetime Waterproof
- Painted Bevel Edge
- Embossed in Register
- Wear Layer 0.78 mm/28 mil
- IXPE Acoustic Insulation Layer
- Angle/Drop Locking
- 100% Recyclable

## SOVEREIGN

15 Year Commercial, Lifetime Residential, Lifetime Waterproof

- 4 Sided Micro Bevel
- Wear Layer 0.55 mm/22 mil
- IXPE Acoustic Insulation Layer
- Angle/Drop Locking
- 100% Recyclable

## MONARCH

10 Year Commercial, Lifetime Residential, Lifetime Waterproof

- Wear Layer 0.3 mm/12 mil
- IXPE Acoustic Insulation Layer
- Angle/Drop Locking
- 100% Recyclable



## ROYAL

Royal Solid Rigid Core offers the impressive strength, waterproofing, and durability at a great value.

- 15 Year Residential, 10 Year Commercial
- 12 mil Wear Layer
- Color Bevel
- 1.2mm XPE Acoustic Insulation Layer
- Uniclic Locking System
- 100% Recyclable

## REPUBLIC

Elite SPC/Rigid provides unprecedented strength, dimensional stability, and damage resistance.

- 15 Year Commercial, Lifetime Residential, Lifetime Waterproof
- Comfort Level Walking & Warmth Layer
- Industry-Leading Sound Dampening
- Wear Layer 0.55 mm/22 mil
- Beveled or Square Edge
- Clickable Floating Installation
- Patented 7-Layer, Homogenous Extrusion



## DYNASTY

Elite SPC/Rigid provides unprecedented strength, dimensional stability, and damage resistance.

- 30 Year Commercial, Lifetime Waterproof, Lifetime Residential
- 10 Year Residential Scratch Resistance & Pet Scratch Resistance, 10 Year Stain Resistance
- Four-Sided Color-Enhanced Bevel
- EVA Acoustic Pad
- Click Floating Floor
- Floor Score Certified
- Phthalate Free
- Made from 100% Virgin PVC



design your dream home  
[badgerlax.com](http://badgerlax.com) • 608.788.0100

